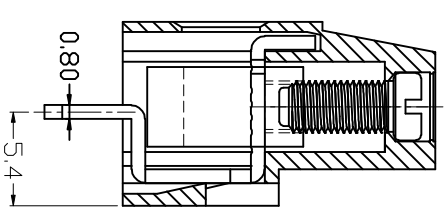
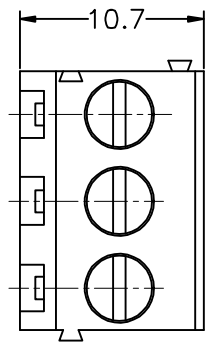
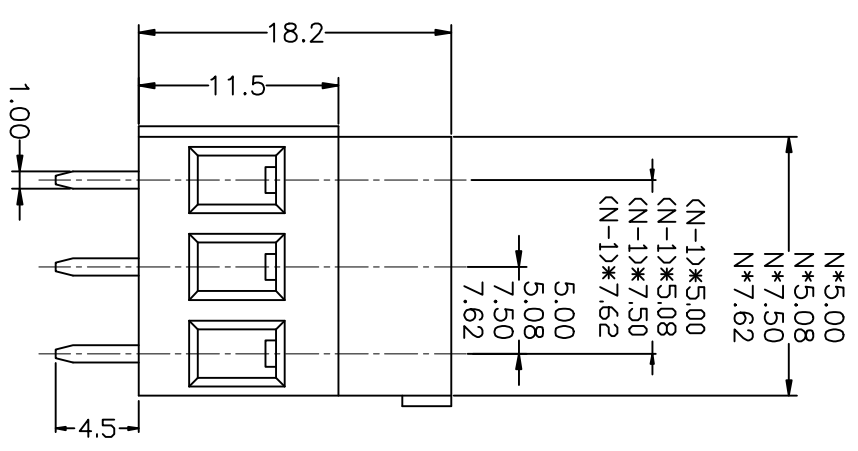


REV	DESCRIPTION	DRAWN	CHECKED	APPROVED



**·MATERIAL**  
**SCREWS : M3 STEEL ZINC PLATED**  
**CONTACT : BRASS**  
**PIN HEADER : BRASS, TIN PLATED**  
**HOUSING : PA66, UL94V-0**

**·ELECTRICAL**  
**RATED VOLTAGE : 300V**  
**RATED CURRENT : 20A**  
**CONTACT RESISTANCE : 20mΩ**  
**INSULATION RESISTANCE : 5000MΩ/1000V**  
**WITHSTANDING VOLTAGE : AC1500V/1min**  
**WIRE RANGE : 24-12AWG 2.5mm²**

**·MECHANICAL**  
**TEMP RANGE : -40℃~+105℃**  
**MAX SOLDERING : +250℃, FOR 5 SEC.**  
**OROUDE : 0.4mm(3.6IB,IN)**  
**STRUO LEBCTG : 6-7mm**

GENERAL TOLERANCE		ANGLE TOLERANCE		PROJECTION	
X.	±0.20	X.	±2°	UNITS	mm
.X	±0.15	.X	±1°	SHEET SIZE	A4
.XX	±0.10	.XX	±0.5°	TITLE	EURO TERMINAL BLOCKS
DRAWING TYPE		COMPONENTS		PITCH: 5.00/5.08/7.50/7.62 MM	
SCALE	1:1	SHEET	1 OF 1	SERIES	
DRAWING NO.					KF129V SERIES

**DFP**  
**KAIFENG ELECTRONIC**  
**慈溪市凯峰电子有限公司**  
**KAIFENG ELECTRONIC CO.,LTD**