

Germany **Brand:** [Siemens; D \(S.& Halske / S. Electrogeräte\)](#)

Tube type: IC - Integrated Circuit Universal

Identical to **FZK105**



FZK105
Karlheinz Fischer

Base SPECIAL TUBEBASE in general

Filament Solid State

Description **Aufbau:** IC (24 Trans., 22 Dioden, 39 Widerst.);
Form: DIP-16;
Typ: LSL (Langsame Störsichere Logik, Variante von DTL (Diode-Transistor-Logic): Timing circuit with N-input;

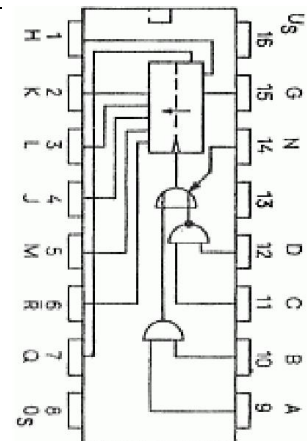
Daten: Ub: 12 V, T op: -25...+85 °C;
ähnlich/similar: FZH101 = 0...70 °C -

Dimensions (WHD) 20 x 7 x 8 mm / 0.79 x 0.28 x 0.31 inch

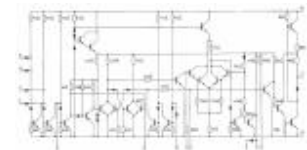
incl. pins / tip

Weight 1 g / 0.04 oz

Literature - - - Pro Electron Datenbuch IS 1975
- - -
- - -
- - -



FZK105: Pro Electron 1975
Günther Stabe



FZK105: Pro Electron 1975
Günther Stabe
