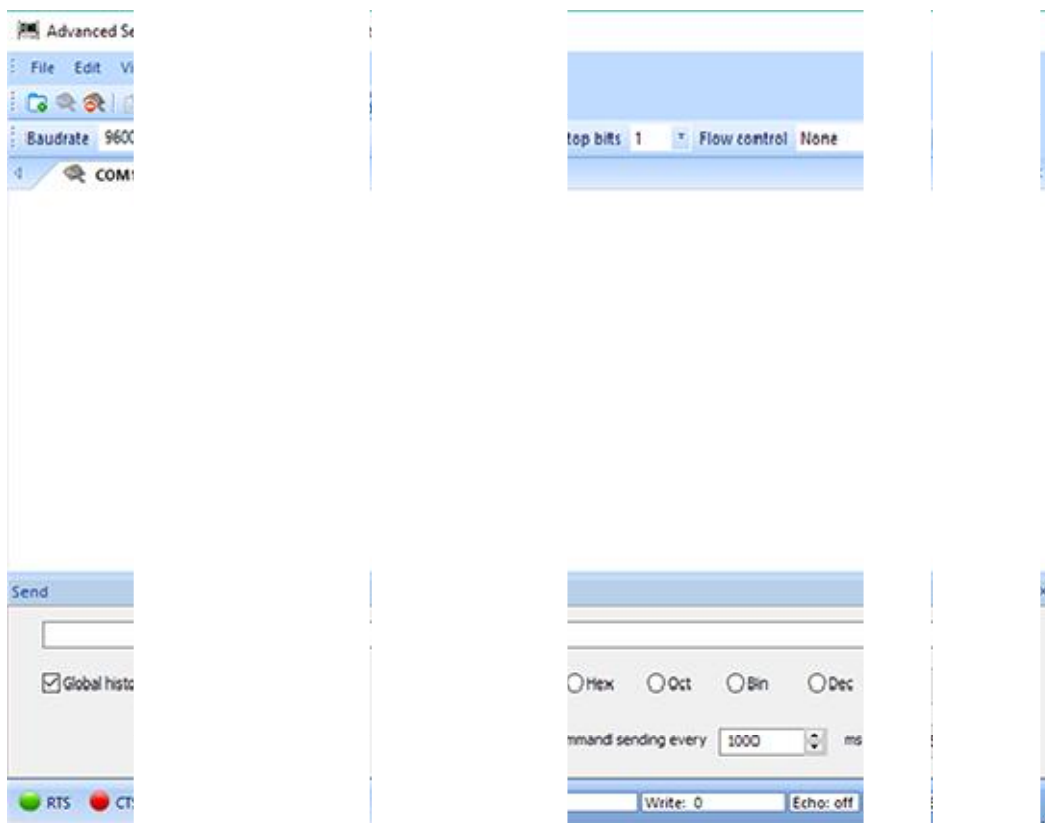


# Serial Port Terminal

## Send various data to serial port

Advanced Serial Port Terminal is a must-have tool for every developer and programmer. This session-based multi-purpose application lets you connect to any serial port device to check, troubleshoot or debug its work and connection. Our terminal is much more functional than standard Windows Terminal, as it is able to send/receive various types of data (ASCII string, binary, octal and hexadecimal) over a serial line, redirect input/output data streams into a specified file, troubleshoot and test modem settings, etc.

Using Advanced Serial Port Terminal you will be able to change serial port settings without the need to close and reopen the serial port, adjust baudrate, databits, parity, stop bits, flow control parameters; save all received bytes into a file for later analysis and lots more. Send, receive and view data in hexadecimal format, switch between dump and terminal view modes: all of these features are very useful for debugging and testing serial port connections.



Advanced Serial Port Terminal is commercial software with a single license costing \$39.95.

**TIME-LIMITED OFFER:** Request a FREE single license for Serial Port Terminal at [www.com-port-monitoring.com](http://www.com-port-monitoring.com)

## Related Solutions

- [Serial Port Monitor](#) A utility for serial port monitoring. Supports all COM port types, monitoring of multiple serial ports, etc.
- [Virtual Serial Port Driver](#) A tool for creating any number of virtual serial port pairs in the system, that behave exactly like real ones.
- [Serial to Ethernet Connector](#) Software for serial data redirection over TCP network. An unlimited amount of serial ports can be shared.

## With Serial Port Terminal you can:

- **Develop hardware and software**

Advanced Serial Port Terminal lets you easily test any hardware or software that uses serial ports. As our Terminal can send data in different formats and features the ability to save data streams into a file you can analyze the work of the hardware by sending various types of commands to it.

- **Work with several ports simultaneously**

You can work with several COM ports at a time. Change the settings of every port you are working with on the go, save all sessions' parameters and load them every time you launch Advanced Terminal. You can switch between terminal and data views that ensure the most effective way of communicating with serial port device.

The same way you can test any software that uses serial com ports and is located on the remote computer. Advanced Serial Port Terminal will connect to the remote computer via null modem cable or TCP/IP protocol if LAN is enabled.

- **Ease the process of troubleshooting**

Advanced Serial Port Terminal provides you with all functionality to test, debug, troubleshoot and tune serial port devices and rs232 connection. You can simply check the work of hardware by sending various types of commands to it. Moreover, save all data streams into a file in order to analyze it later. Advanced Serial Port Terminal allows you to send and receive binary data via X-modem, save history of all typed commands for all opened sessions, view all data that has been sent, send special characters to modem and lots more.

Thinking about integrating our functionality into your own industry-specific solution?

Eltima Port Virtualization Technology is just what you need. Thousands of successful companies worldwide have already experienced the undeniable benefits and advantages of powering their software and hardware products with our advanced technology.