

Development board BLE400 + Bluetooth 4.0 NRF51822 module



Description

The development board with [Bluetooth](#) Core51822 module based on the nRF51822 system. It is equipped with UART, I2C and SPI interfaces and USB to UART CP2102 converter. It works with a voltage of 3.3 V and 5 V. It has a battery slot so the module can be powered independently from an external source. The board consists of LED and buttons for use by the user.

Specification

Core51822

The nRF51822 system

Flash memory: 256 KB

RAM: 32 KB

Communication range: up to 30m

Work frequency: 2.4 GHz

Operating voltage: 2 V to 3.6 V

Operating temperature: -40 °C to 85 °C

Built-in antenna

Terminal pitch: 2.00 mm

Module dimensions: 24.5 x 32,26 mm

BLE400

Place on the battery

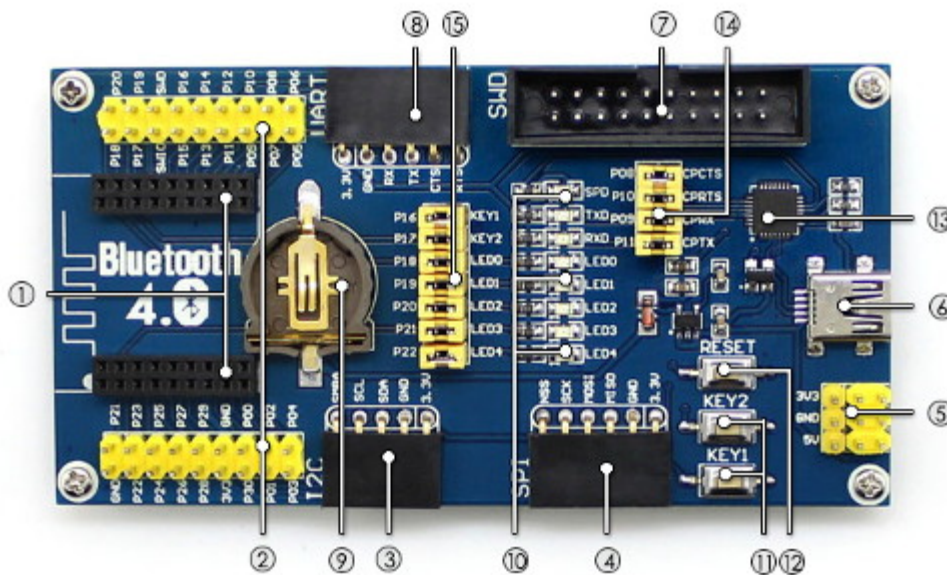
USB - UART converter

LEDs and buttons for the user to use

I2C, SPI and UART interface

Supply voltage: 3.3 V or 5 V

What is on the board?



Connector for the wireless module, for example, Core51822

Pins for the external module

Led out I2C interface

Led out SPI interface

Supply voltage of 3.3 V or 5 V

USB connector: the USB - UART transmission via the built-in CP2102 converter

The debug interface

UART interface

Place for the battery

LEDs of the user

User's buttons

The Reset button

CP2102 chip

USB-UART jumper

Jumper for LEDs and buttons