

客户名称: _____

客户品号: _____

公司品号: PD5731NWNB-PCT

送样日期: 2015.9.06

客户审核		长方审核		
核准人	确认人	核准人	确认人	制作人
				彭晓军
<input type="checkbox"/> 接受 <input type="checkbox"/> 不接受				

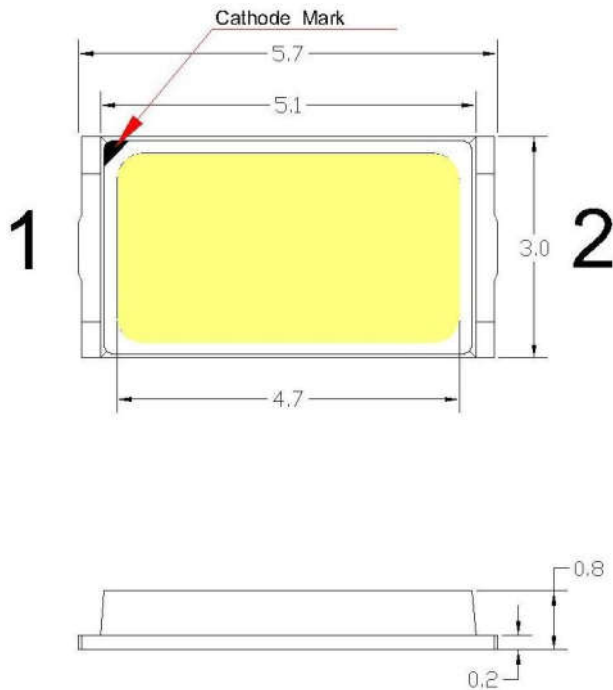
◆ Features

- ◆ Outline dimension :5.6mm*3.0mm*0.8mm
- ◆ SMD Top View LED (White Color)
- ◆ RoHS compliant lead-free soldering compatible
- ◆ Soldering methods :SMT assembly available
- ◆ RoHS compliant
- ◆ Package:15000pcs/reel

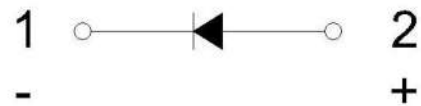
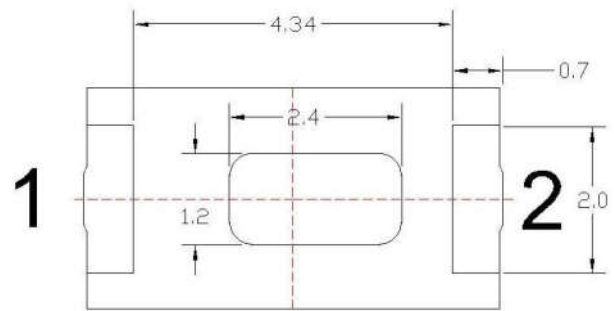
◆ Application

- ◆ Tubular Light application
- ◆ General use

◆ Outline Dimension



ATTENTION
OBSERVE PRECAUTIONS
FOR HANDLING
ELECTROSTATIC
SENSITIVE DEVICES



1: CATHODE
2: ANODE

Notes:

- [1]: All dimensions are in millimeters (inches);
- [2]: Tolerances are $\pm 0.3\text{mm}$ (0.012inch) unless otherwise noted.

◆ Absolute maximum ratings @ $I_F=150\text{mA}, T_a=25^\circ\text{C}$

Item	Symbol	Absolute Maximum Rating	unit
Forward Current	I_F	150	mA
Pulse Forward Current	I_{FP}	180	mA
Reverse Voltage	V_R	5	V
Power Dissipation	P_D	500	mW
Operating Temperature	T_{opr}	-30~+85	$^\circ\text{C}$
Storage Temperature	T_{stg}	-30~+100	$^\circ\text{C}$
Junction Temperature	T_J	110	$^\circ\text{C}$
Electrostatic Discharge	ESD	2000(HBM)	V

◆ Electrical-Optical characteristics @ $T_a=25^\circ\text{C}$

Item	Symbol	Test Condition	Min	Typ	Max	Unit
Forward voltage ^[1]	VF	$I_F=150\text{mA}$	3.0	-	3.6	V
Luminous Flux	Φ_v	$I_F=150\text{mA}$	50	-	60	LM
View Angle	2 θ 1/2	$I_F=150\text{mA}$	-	120	-	deg
Reverse Current	IR	$V_R=5\text{V}$	-	-	10	μA
Color Rending Index	CCT	$I_F=150\text{mA}$	5000	-	8000	K
Color Rending Index	CRI	$I_F=150\text{mA}$	-	70	-	Ra
Notes: CIE Chromaticity [1] Forward voltage(VF) $\pm 0.1\text{V}$;	X	$I_F=150\text{mA}$	详见分光标准			
	Y					

[2] Luminous Flux(Φ_v) $\pm 10\%$;

[3] Luminous Intensity(CCT) $\pm 10\%$, (X, Y ± 0.01);

[4] Color Rending Index (CRI) ± 3 ;

[5] View Angle (2 θ 1/2) ± 5 ;

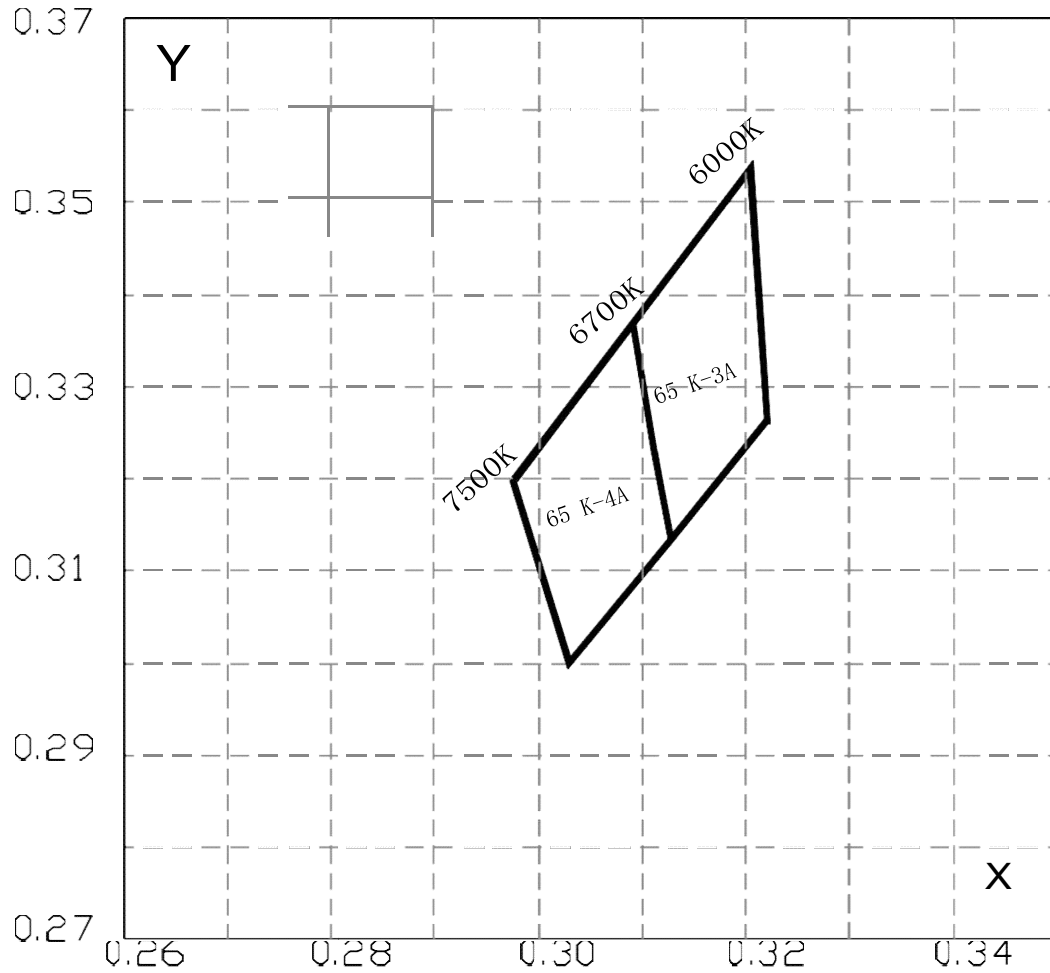
◆ Luminous Intensity Rank ϕ_v @IF=150mA ,Ta=25℃(Unit:lm)

BIN	Min	Max	BIN	Min	Max
A	50	55	C	60	65
B	55	60			

◆ Forward Voltage Rank V_F @IF=150mA, Ta=25℃ (Unit:V)

Bin	Min	Max	Bin	Min	Max
V1	2.7	3.0	V4	3.3	3.6
V2	3.0	3.3			

◆ Color Rank @IF=150mA ,Ta=25℃(Unit:X/Y)



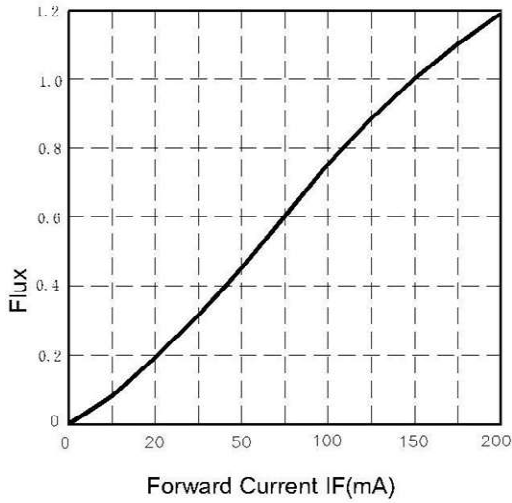
色区名	坐标					相对色温
65K-3A	X	0.3091	0.3205	0.3221	0.3127	/
	Y	0.3368	0.3537	0.3264	0.3134	
65K-4A	X	0.2976	0.3091	0.3127	0.303	/
	Y	0.3199	0.3368	0.3134	0.30	

Notes:

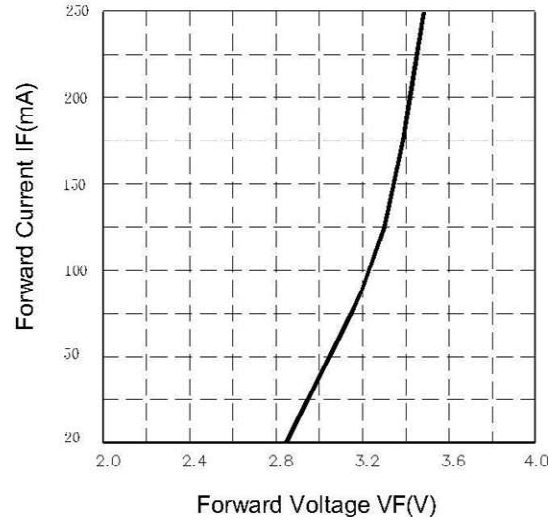
[1] Color Coordinates Measurement allowance is ± 0.01 ;

◆ Typical Electro-optical Characteristics Curves @Ta=25℃

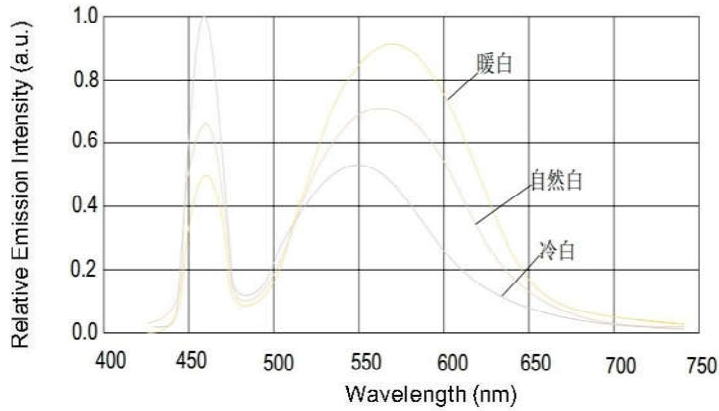
Flux vs. Forward Current



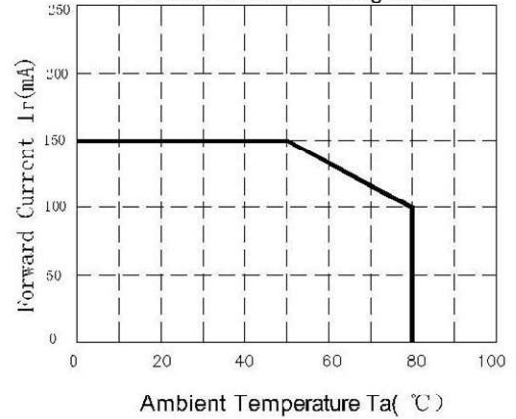
Forward Voltage VS Forward Current



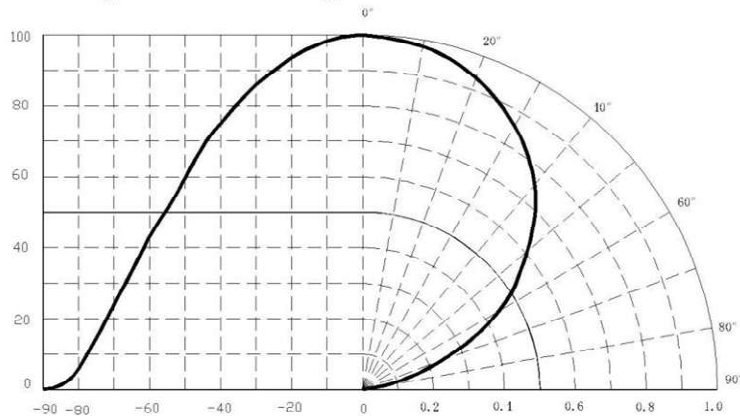
Relative Emission Intensity VS Wavelength



Forward Current Derating Curve



Typical Lambertian Type Radiation Pattern



◆ Reliability
┆ TEST ITEMS AND RESULTS

Test Item	Rdf.Standard	Test Conditions	Note	Number of Damaged
High Temperature storage	JESD22-A103	Temp:100□±5□	1000 hrs	0/22
Low Temperatue Storage	JESD22-A119	Temp:-40□±5□	1000 hrs	0/22
Temperature Cycle	JESD22-A104	100□±5□ 30min ↓↑5min -40□±5□ 30min	100 cycle	0/22
Reflow	JESD22-B106	Temp:260□max T=10sec	3Times	0/22
Life Test	JESD22-A108	Ta=25□±5 □ IF=150MA	1000 hrs	0/22
High Temperatue High Humidity Life Test	JESD22-A101	85□±5 □/85%RH IF=100mA	1000 hrs	0/22

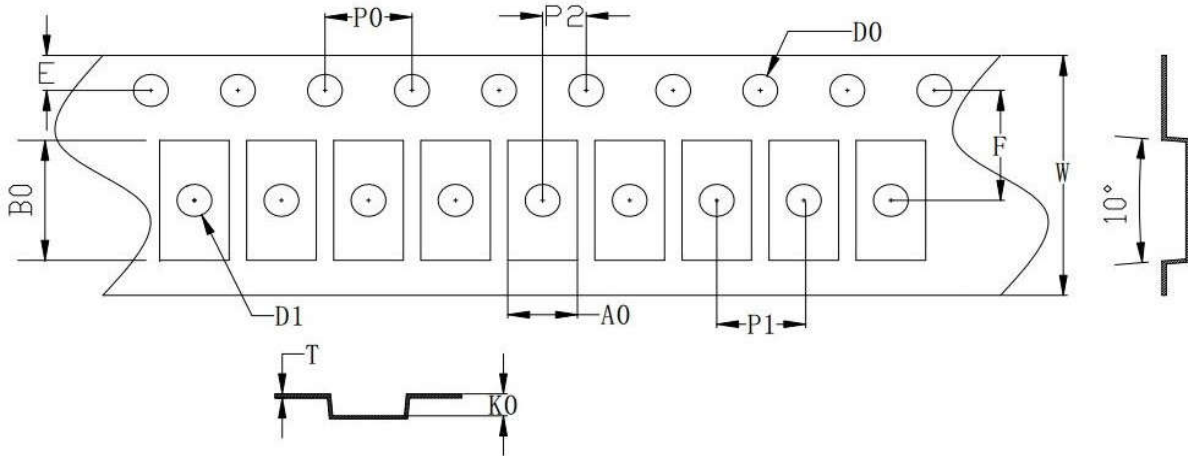
┆ CRITERIA FOR JUDGING THE DAMAGE

Item	Symbol	Test Conditions	Criteria for Judgement	
			Min.	Max.
Forward Voltage	VF	IF=150mA	—	U.S.L*)×1.1
Luminous Intensity	Φ V	IF=150mA	LSL×0.7	

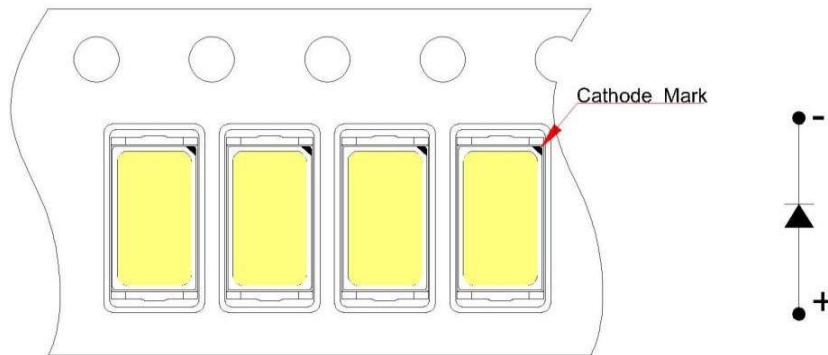
Note:
U.S.L.:Upper Standard Level
L.S.L.:Lower Standard Level

◆ Packaging Specifications

. Taping And Orientation



ITEM	W	A0	B0	K0	E	F	D0	D1	P0	P1	P2	T
DIM	12.00	3.10	6.15	1.30	1.75	5.50	1.60	1.60	4.00	4.00	2.00	0.20
TOLE	±0.1	±0.1	±0.1	±0.1	±0.1	±0.1	±0.1	±0.1	±0.1	±0.1	±0.1	±0.05



NOTE S:

1. The cathode is oriented towards the tape sprocket hole in accordance with ANSI/ELARS-481 specifications
2. 15000PCS/Reel.