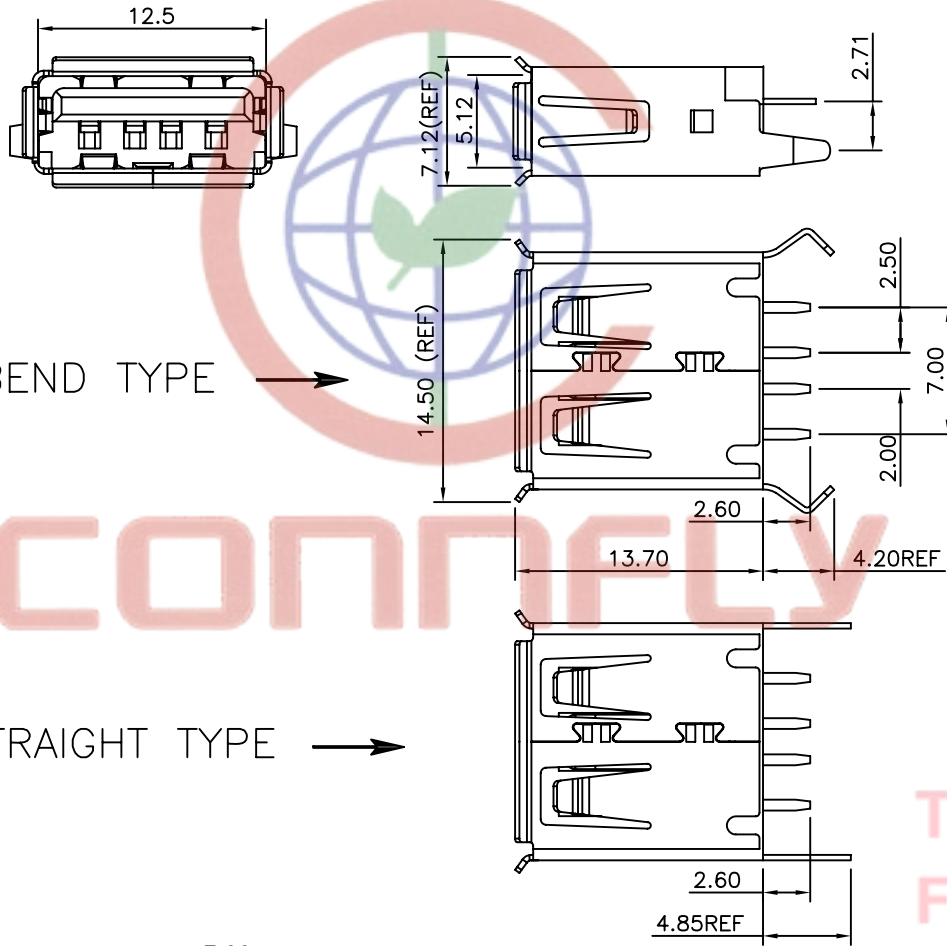


REV.	DESCRIPTION	DRAWN	CHECKED	APPROVED
A	NEW RELEASE	YCH 06/20/12'	~	



NOTES:

1. SPECIFICATIONS:

- 1.0 CONTACT RESISTANCE: 30mΩ max.
- 1.1 INSULATOR RESISTANCE: 1000MΩ min.AT DC 500V.
- 1.2 CURRENT RATING: 1.5A.
- 1.3 VOLTAGE RATING: 30V AC/DC.
- 1.4 DIELECTRIC STRENGTH: AC 500V FOR 1 Minute.

2. MATERIALS:

- 2.0 HOUSING: PBT+30% GLASS FIBER(UL 94--0).
- 2.1 CONTACT: COPPER ALLOY
- 2.2 SHELL: COPPER ALLOY.

3. PRODUCT NUMBER CODE:

DS1095-09-X X X X

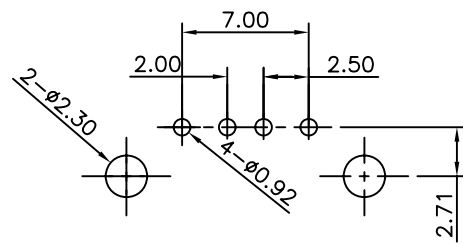
CONTACT PLATING
 0: Selective gold flash
 03: Selective gold 3u"
 30: Selective gold 30u"

BOARDLOCK TYPE
 S: Straight type
 B: Bend type

SHELL PLATING:
 N: Nickel
 6: Tin

COLOR OF HOUSING:
 W: White
 B: Black

SERIES No.
 DS1095-09



RECOMMEND PCB LAYOUT
 (TOLERANCE=±0.05)

GENERAL TOLERANCE		ANGLE TOLERANCE		PROJECTION		TITLE
X.	±0.60	X.	±5°	UNITS	mm	USB A/F180° TYPE Single port Female TYPE
.X	±0.38	.X	±3°	SHEET SIZE	A4	SERIES DS1095-09 SERIES
.XX	±0.25	.XX	±2°			
DRAWING TYPE		CUSTOMER		晨翔电子有限公司 CONNFLY CONNFLY ELECTRONIC CO. LTD		
SCALE		1:1 SHEET 1 OF 1				
DRAWING NO.		C-DS1095-09-XXXX				

Tel:86-574-63508787
 Fax:86-574-63510817
 E-mail:sale@zhenqin.com.cn
 Http://www.connfly.com