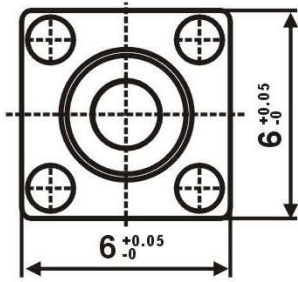
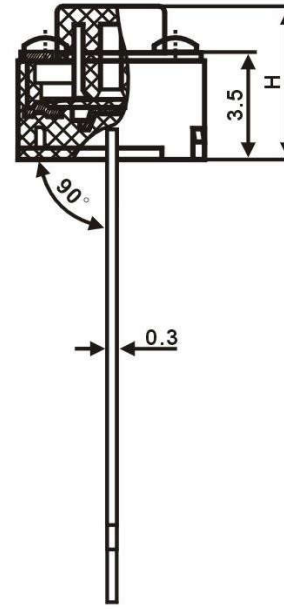
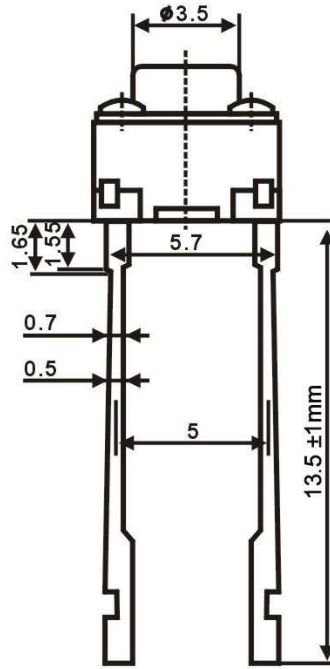


TACT SWITCH



General Tolerance: $\pm 0.2\text{mm}$



H (mm)

- 4.3
- 5
- 5.5
- 6
- 6.5
- 7
- 7.5
- 8
- 8.5
- 9
- 9.5
- 10
- 10.5
- 11
- 11.5
- ..

CODE	OPERATING FORCE(gf)
T	100±30
V	130±30
X	160±50
W	170±50
Y	190±50
Z	250±100

SPECIFICATIONS

1. RATING:DC 12V 50mA
2. TRAVEL:0.25 ± 0.1mm
3. CONTACT RESISTANCE 100m Ω MAX
4. LIFE: normal 50,000~100,000 times
(over 100,000 times on request)