

**SPECIFICATIONS**

CONTACT RATING: 25mA @24 VDC (switching Rating)  
 100mA @50VDC(non-switching Rating)  
 ELECTRICAL LIFE:2,000 operations min. @ 24VDC,25mA  
 CONTACT RESISTANCE: 50 mΩ max. initial  
 INSULATION RESISTANCE: 100 MΩ min. at 500 VDC  
 DIELECTRIC STRENGTH: 500 V AC /1 min  
 OPERATION FORCE: 400 gf max. (DP series)  
 1000 gf max. (DS & DA series)  
 STORAGE TEMPERATURE: -40°C to 85°C  
 CIRCUIT: SPST

**MATERIALS**

COVER: UL94V-0 PBT,Thermoplastic(Red.Black.Blue)  
 BASE: UL94V-0 PBT, Thermoplastic(Black)  
 ACTUATOR: UL94V-0 PBT, Thermoplastic(white)  
 CONTACT PLATING: Gold plating over nickel  
 TOP SEAL: Polyester film  
 POTTING MATERIAL: Epoxy

INDEX

TOGGLE

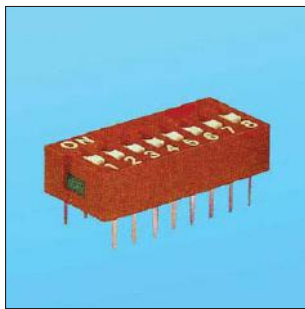
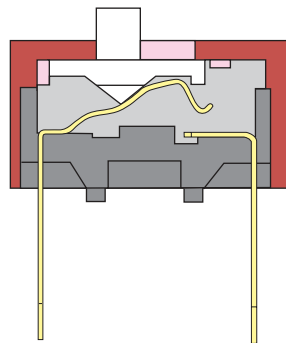
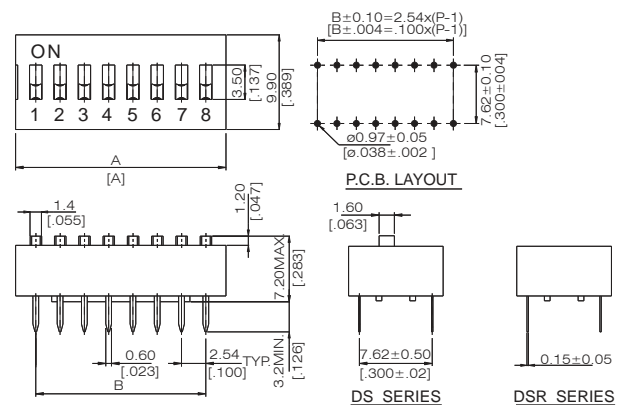
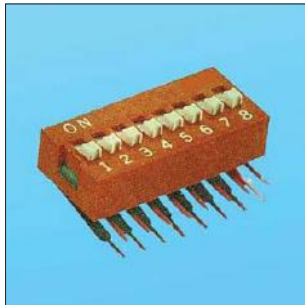
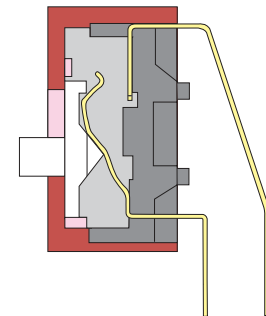
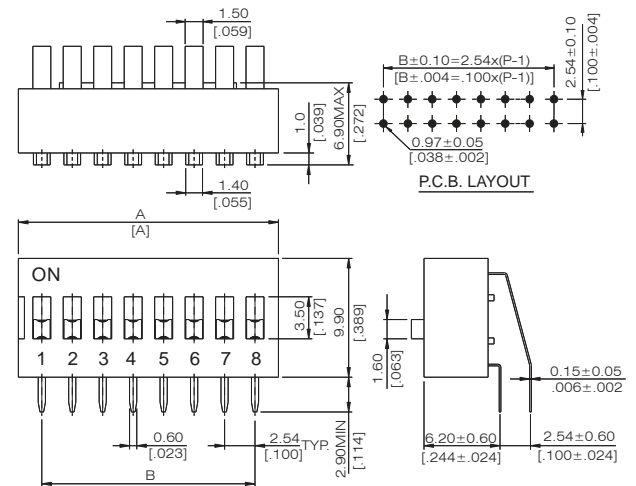
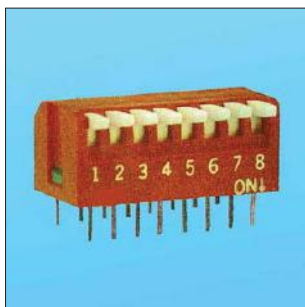
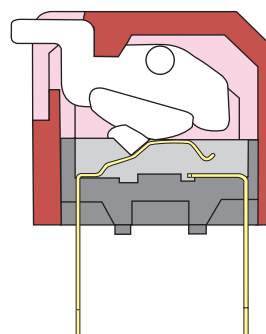
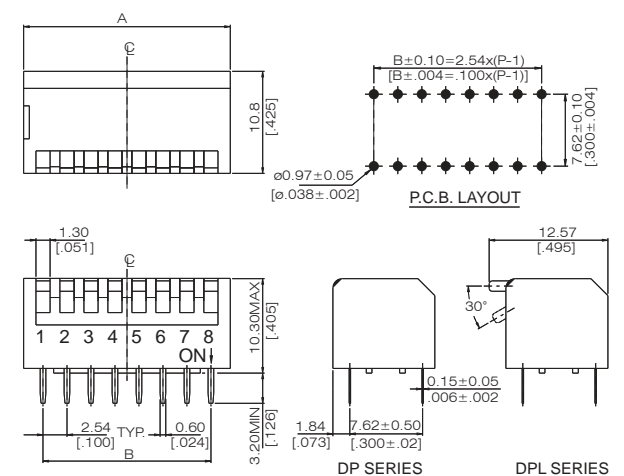
ROCKER

SLIDE

PUSH BUTTON

DIP

TACT

 DS,DSR SERIES  
 SLIDE TYPE DIP SWITCH

**CONTACT SYSTEM**

**DIMENSIONS**

 DA SERIES  
 RIGHT ANGLE TYPE DIP  
 SWITCH

**CONTACT SYSTEM**

**DIMENSIONS**

 DP,DPL SERIES  
 PIANO TYPE DIP SWITCH

**CONTACT SYSTEM**

**DIMENSIONS**


**SOLDERING AND CLEANING PROCESSES**

- △ Keep all switch contacts in their "OFF" position for all operations.
- △ WAVE SOLDERING: Recommended solder temperature at 500°F (260°C) max 5 seconds.
- △ HAND SOLDERING: Use a soldering iron of 30 Watts or less, controlled at 350°C approximately 5 seconds.
- △ Care should be exercised so that flux from the upper part of the printed circuit board does not adhere to the switch.
- △ Do not clean the switch body except with top tape sealed type, which can only spray of cleaning method from top s/w.

**MODELS**

DS - 12 DSR - 12	DA - 12	DP - 12 DPL - 12	12	31.84[1.254]	27.94[1.100]
DS - 10 DSR - 10	DA - 10	DP - 10 DPL - 10	10	26.76[1.054]	22.86[.900]
DS - 09 DSR - 09	DA - 09	DP - 09 DPL - 09	09	24.22[.954]	20.32[.800]
DS - 08 DSR - 08	DA - 08	DP - 08 DPL - 08	08	21.68[.854]	17.78[.700]
DS - 07 DSR - 07	DA - 07	DP - 07 DPL - 07	07	19.14[.754]	15.24[.600]
DS - 06 DSR - 06	DA - 06	DP - 06 DPL - 06	06	16.60[.654]	12.70[.500]
DS - 05 DSR - 05	DA - 05	DP - 05 DPL - 05	05	14.06[.554]	10.16[.400]
DS - 04 DSR - 04	DA - 04	DP - 04 DPL - 04	04	11.52[.454]	7.62[.300]
DS - 03 DSR - 03	DA - 03	DP - 03 DPL - 03	03	8.98[.354]	5.08[.200]
DS - 02 DSR - 02	DA - 02	DP - 02 DPL - 02	02	6.44[.254]	2.54[.100]
PROD. NO.			NO.OF POS.	DIM. A (DP,DPL)	DIM. B (DS,DSR,DA)
SCHEMATIC(TYP.)					
 (2,3,4,5,6,7,8,9,10,12, POS AVAIL)					

**HOW TO ORDER**
