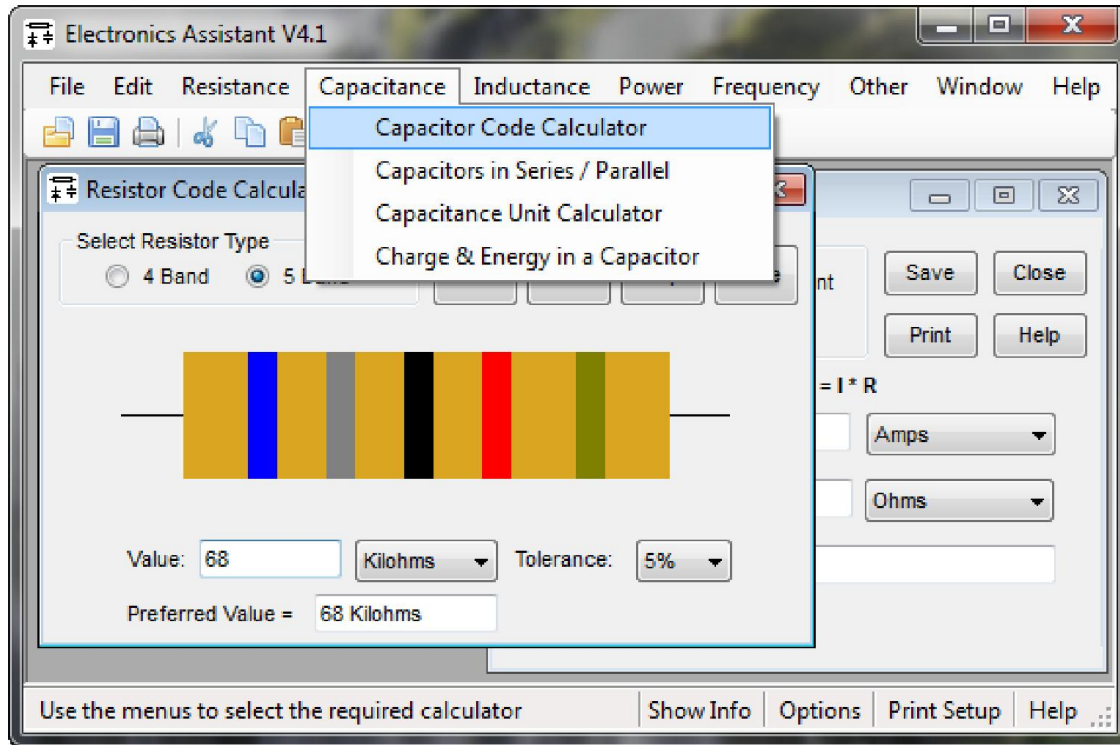


Electronics Assistant

Electronics Assistant is a Windows program that performs electronics-related calculations. It includes a resistor colour code calculator, resistance, capacitance and power calculations and more. Details of calculations can be saved or printed. It provides all the functions found in the calculators section of this site and more in a stand-alone user friendly program.



Click an image to view a full size screenshot



Version 4.31 includes the following features:

- Calculation of 555 timer duty cycles < 50%
- Calculation of LED resistor power dissipation
- Option to calculate resistor for multiple LEDs in series
- Capacitor code calculator lock-up bug in V4.2 fixed

Other features include saving or printing of calculation reports, calculation of preferred resistor values, links to open Windows Calculator and up to 3 user-defined programs from the toolbar, hideable theory and formula information panels and full built-in help.

Note that V4.31 fixes a bug introduced into the LED resistor calculator in V4.3; there are no other changes between these versions. The version numbering has been changed to use an extra digit, all future versions will use this system.

- [Electronics Assistant](#) (EXE File, 516 kB)

License: Freeware, however if you find the program useful, or use it for commercial purposes a [small donation](#) would be appreciated to support further development. Thanks.



[Click here](#) to download and run the installation package. This will install Electronics Assistant and create Start Menu shortcuts and a desktop icon if desired. **IMPORTANT: If you are using version 3.3 or earlier you should uninstall it first.** This can be done using 'Add/Remove Programs' from Windows Control Panel. Unfortunately any program settings will need to be reset. Users of version 4.0 or later can install over these versions. Due to changes to allow compatibility with Windows 7, settings will not be preserved if upgrading from version 4.0 - these can be reset using the options dialog box after installation. Settings from version 4.1 or later will be preserved.

Electronics Assistant is built on Microsoft's .NET framework 2.0 and requires the framework to run. The installer will check if this is installed and download it automatically if required. Alternatively it can be installed via Windows Update.

Electronics Assistant has been tested on Windows 8, Windows 7, Windows Vista, & Windows XP, and should run on other versions since Windows 98. Windows 98 users will need to change the path of Windows Calculator to 'C:\windows\calc.exe'. See the help file for details of how to do this. [Click here](#) to download the previous version of Electronics Assistant (V3.3) for use on older systems or Linux.

Version 3.3 has also been tested under WINE on Codeweavers Crossover Linux by Garfield Lucas, and on Gutsy Gibbon 7.10 (again under WINE) by Innes Nimmo. Innes reports that version 4.1 is a no-go on Linux at the moment due to the requirement for the .NET framework and IE5. Thanks to Garfield and Innes for testing these, if anyone else is running Electronics Assistant on Linux or a Mac please let me know how you get on.