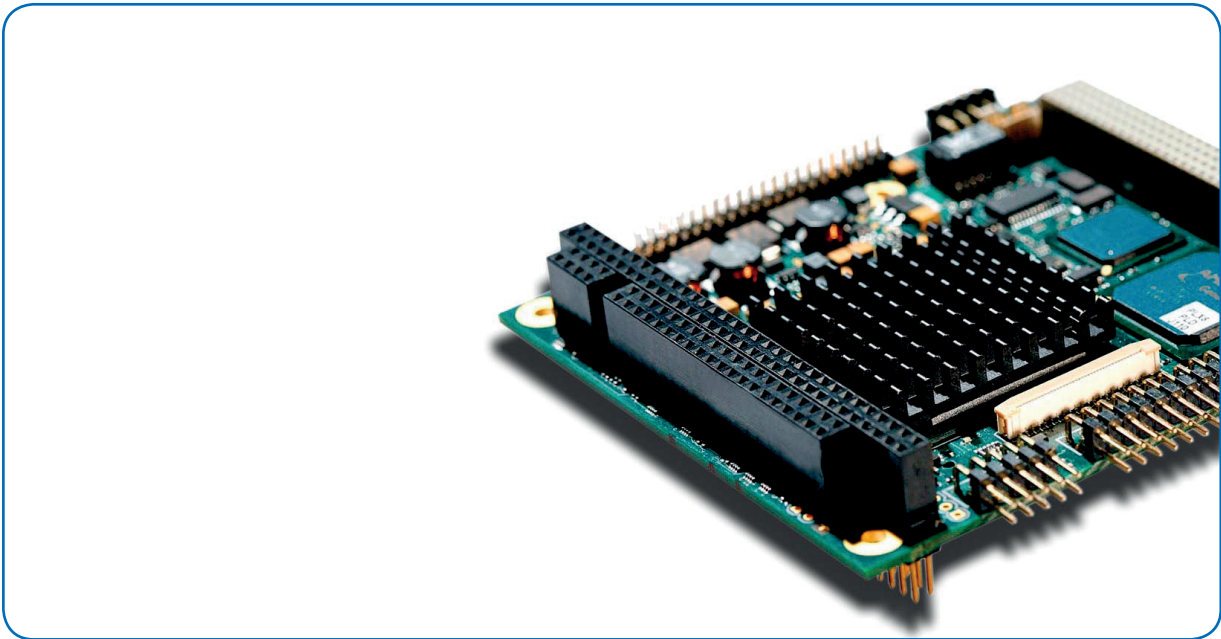


» MOPSlcdLX «



- » Extreme low power fanless PC/104plus, 500MHz AMD LX800
- » PC/104plus card for ISA and PCI IO card expansion
- » With full 16Bit I/O and memory support
- » FULL Featured embedded SBC (USB, COM, LAN, etc.)

The MOPSLcdLX (Minimized Open PC System) with its 500 MHz AMD LX800™ processor offers high reliability and performance at low power consumption – only passive cooling if at all – no moving parts. The PC/104-Plus (ISA & PCI signals) enables applications with wide choice ISA IO or high PCI I/O performance requirements. The MOPSLcdLX is a high integrated CPU board which includes in addition to the standard interfaces a PCI graphic, a 10/100 MBit Ethernet and 2x USB interfaces. A watchdog timer and a realtime clock are standard. The SO-DIMM socket enables this board to be equipped with up to 1 GByte of DDR-

RAM. The lower socket is used as JILI (LVDS) interface for connecting LCD flatpanels. The on chip Graphics+ Controller supports CRT & TFT. A Kontron chipDISK (IDE compatible flash disk) with capacity up to 1GB can be plugged directly onto the 2.5" harddisk interface. All MOPS PC/104 boards are Plug&Work compatible, which considerably reduces the time to market. All MOPS PC/104 provide the same pinout for keyboard, COM1 and COM2, 44pin IDE, 2xUSB, LPT as well as LAN. This is the common MOPS-family feature, which easens the upgradeability enormously within the Kontron MOPS PC/104-products.

Technical Information

Full PC/104plus compliant Industry Standard

Plug'n Play compatible to another MOPS and therefore exchangeable

CPU

AMD LX800™ 500 MHz, fanless

SDRAM

DDR-RAM-SODIMM socket

Graphic

Onchip engine with shared VRAM, CRT & JILI Interface

Panel/CRT

Yes/yes

10/100 Base T Ethernet

Intel® 82551ER

USB

2x USB 2.0, with Legacy support

EIDE Interface

Yes - 44 pin header

Floppy Interface

Yes

Printer Interface

Yes

Keyboard/Mouse Controller

Yes/yes

RS232C

2x

LANBoot

Yes - PXE

DarkBoot

Yes

Watchdog

Yes

Real Time Clock

Yes

Dimensions

96x90 mm (3.8 x 3.6")

Power supply

5V only (*)

Expansion Interfaces

PC/104 ISA (full 16 Bit I/O and memory support)
PC/104+ PCI

Temperature (*)

Operation: 0° to 60° C (with appropriate airflow)
Storage: -10° to 85° C

Max. humidity

Max. humidity
Operation: 10% to 90%
Storage: 5% to 95% (non condensing)

(*) Ask about wider temperature ranges

Ordering Information

Article	Part No.	Description
MOPSLcdLX	01036-0000-53-4	Low Power AMD LX800 500MHz, PC/104 (ISA), 16 Bit ISA support
MOPSLcdLX	01036-0000-53-5	Low Power AMD LX800 500MHz, PC/104plus (ISA & PCI), 16 Bit ISA support

CORPORATE OFFICES

Europe, Middle East & Africa

Lise-Meitner-Str. 3-5
86156 Augsburg
Germany

Tel.: +49 (0) 821 4086-0
Fax: +49 (0) 821 4086 111
sales@kontron.com

North America

14118 Stowe Drive
Poway, CA 92064-7147
USA

Tel.: +1 888 294 4558
Fax: +1 858 677 0898
info@us.kontron.com

Asia Pacific

17 Building, Block #1, ABP.
188 Southern West 4th Ring Road
Beijing 100070, P.R.China

Tel.: +86 10 63751188
Fax: +86 10 83682438
info@kontron.cn