



PCKWK series

Latching, Slim 16Amp Miniature Power PC Board Relay

Appliances, HVAC, Office Machines.

Users should thoroughly review the technical data before selecting a product part number. It is recommended that user also seek out the pertinent approvals files of the agencies/laboratories and review them to ensure the product meets the requirements for a given application.

Features

- Efficient, latching operation.
- Slim outline to save board space.
- 1 Form A contact arrangement.

Contact Data @ 20°C

Arrangements: 1 Form A (SPST-NO).

Material: Ag Alloy.

Max. Switching Rate: 300 ops./ min. (no load),
20 ops./ min. (rated load).

Expected Mechanical Life: 5 million ops (no load).

Expected Electrical Life: 100,000 ops (16A @ 250VAC).

Minimum Load: 100mA @ 5VDC.

Initial Contact Resistance: 100 milliohms @ 1A, 6VDC.

Contact Ratings

Ratings: 16A @ 277VAC resistive.

Max. Switched Voltage: AC: 277V.

Max. Switched Current: 16A.

Max. Switched Power: 4,432VA.

Initial Dielectric Strength

Between Open Contacts: 1,000VAC, 50/60 Hz. (1 min.);

1,200VAC, 50/60 Hz. (1 sec.).

Between Contacts and Coil: 4,000VAC, 50/60 Hz. (1 min.);

4,800VAC, 50/60 Hz. (1 sec.).

Surge Voltage Between Coil and Contacts: 10,000V (1.2/50µs).

Initial Insulation Resistance

Between Mutually Insulated Conductors: 1,000Mohm @ 500VDC.

Coil Data

Voltage: 12VDC (Consult factory for other coil voltage).

Nominal Power: 1.8W (SET).

800mW (RESET).

Max. Coil Power: 130% of nominal at 20°C.

Coil Data @ 20°C

PCKWK				
Rated Coil Voltage (VDC)	SET Coil Resistance (ohms) ± 10%	RESET Coil Resistance (ohms) ± 10%	SET Coil Voltage Range (VDC)	RESET Coil Voltage Range (VDC)
12	80	180	6.0 - 9.0	2.0 - 7.0

Operate Data @ 20°C

SET Time: 10 ms max. (including bounce) at rated voltage.

8 ms max. (including bounce) at 130% rated voltage.

RESET Time: 10 ms max. at rated voltage.

8 ms max. at 130% rated voltage.

The pulse to either the set or reset coil of the PCKWK relay should be no less than 30 milliseconds duration, and no more than 1 second duration.

Observe coil polarity.

Do not apply voltage to both SET and RESET coils simultaneously.

External magnetic fields may affect the operation of the relay.

Environmental Data

Temperature Range:

Operating: -30°C to +70°C.

Vibration, Mechanical: 10 to 55Hz., 1.5mm double amplitude for 2 hr.

Operational: 10 to 55Hz., 1.5mm double amplitude for 5 min.

Shock, Mechanical: 980m/s².

Operational (when SET): 98m/s².

Operational (when RESET): 980m/s².

Operating Humidity: 20 to 65% RH. (Non-condensing).

Mechanical Data

Termination: Printed circuit terminals.

Enclosure: Vented (Flux-tight) plastic cover.

Weight: 0.49 oz (14g) approximately.

Ordering Information

Typical Part Number ▶

PCKWK -1 12 D 2 M ,000

1. Basic Series:
PCKW = 16A double coil relay

2. Termination:
1 = 1 pole

3. Coil Voltage:
12 = 12VDC Consult factory for other voltages.

4. Coil Input:
D = Standard

5. Contact Material:
2 = AgSnO

6. Contact Arrangement:
M = 1 Form A (SPST-NO)

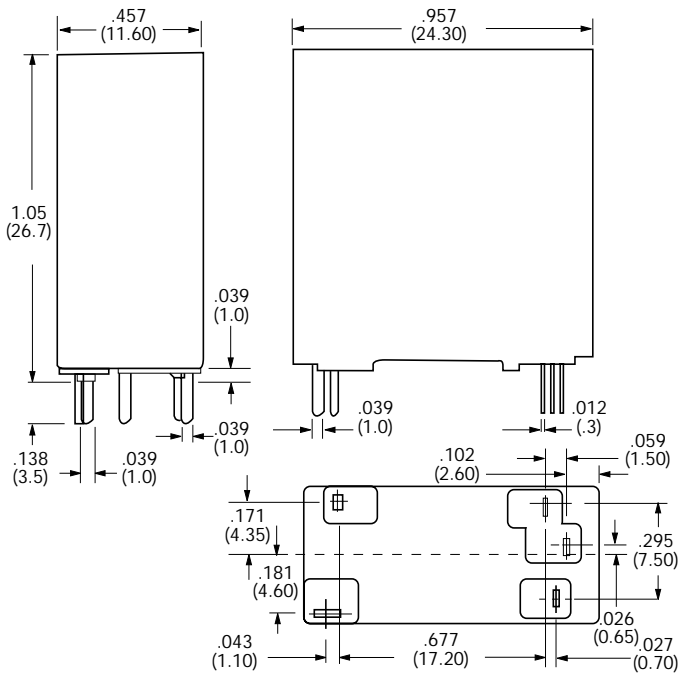
7. Suffix:
,000 = Standard model Other Suffix = Custom model

* Not suitable for immersion cleaning processes.

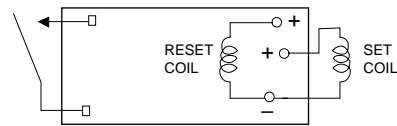
Our authorized distributors are more likely to maintain the following items in stock for immediate delivery.

None at present.

Outline Dimensions



Wiring Diagram (Bottom View)



PC Board Layout (Bottom View)

