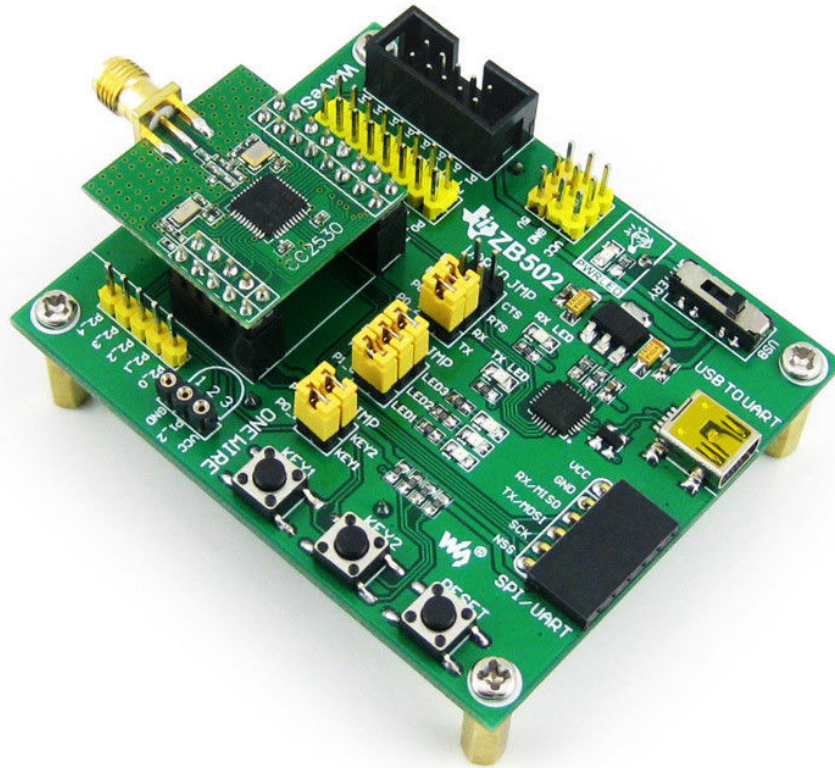


Starter kit ZigBee - ZB502 + Core2530



Description

Starter kit for building the systems that use transmission ZigBee protocols. It consists of the ZB502 board, Core2530 module with antenna and microUSB cable, and the connecting cables. The kit allows for wireless transmission of up to 350 metres.

Core2530 module specification

Supply voltage: 2 V to 3.6 V

Operating temperature: -40 °C to 85 °C

Frequency: 2.4 GHz

Range:

Automatic connection: approx. 120 m

Stable connection: approx. 250 m

Maximum: approx. 350 m

Default baud rate: 38400 b/s (configurable)

Outputs: goldpin connectors, 2.54 mm pitch

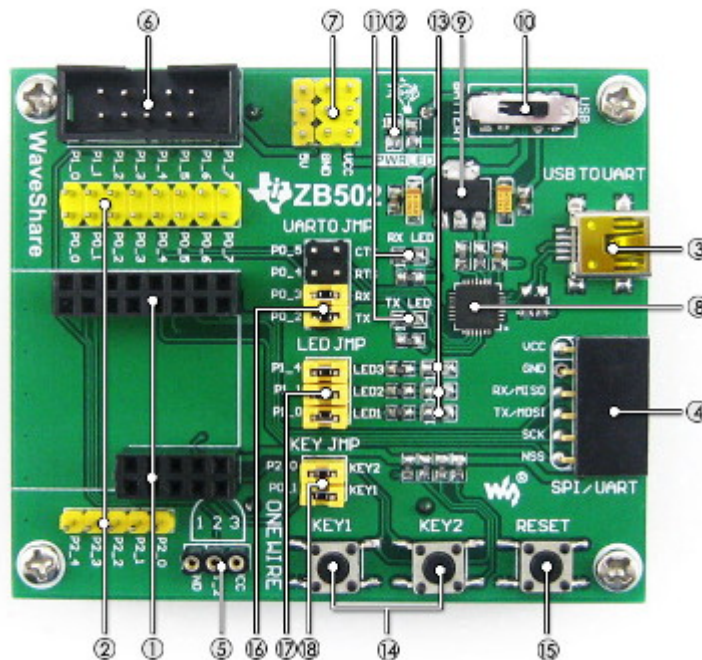
Module dimensions: 27 x 26 mm

Included antenna: 2.4 G 2DB 360 ° omni-directional

Specification of the ZB502 board

Space for 2 x AAA batteries (not included) - available various forms of power supply

Built-in CP2102: USB to UART chip



ZigBee connector: for connecting the modules

Pins of the I/O interface

USB interface

UART / SPI interface

OneWire interface

The debug interface

Output / input power supply of 3.3 V and 5 V. It is mainly used as voltage output or common ground.

CP2102 chip

AMS1117-3.3 chip

The power switch

LEDs indicating about the status of UART transmission

The LED indicating about the power supply

LEDs of the user

Buttons of the user

The reset button

Jumpers of UART interface

Jumpers of LEDs

Jumpers of buttons

Connecting wires with female ends