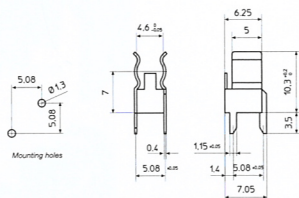
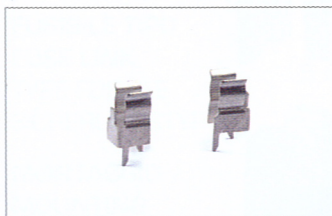


ACCESSORI
ACCESSORIES
ACCESSOIRES
ZUBEHÖR

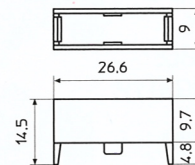
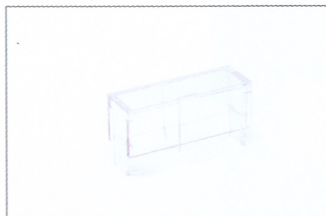
CT134
CONTATTI / CLIPS / CONTACTS / KONTAKTE



Materiale / Material **Cu Zn 37**
Matériau / Material

Trattamento galvanico / Plating **Ni + Sn**
Traitement galvanique / Plating Veredelung

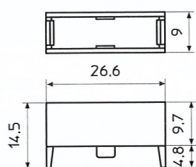
BS140NA
CAPPUCCIO / COVER / CAPUCHON / DECKEL



Materiale / Material **PC - UL 94 V2**
Matériau / Material

Colore / Colour **Trasparente / Clear transparent**
Couleur / Farbe **Transparent / Durchsichtig**

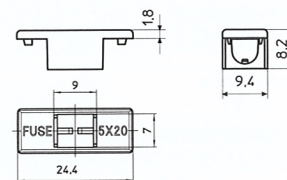
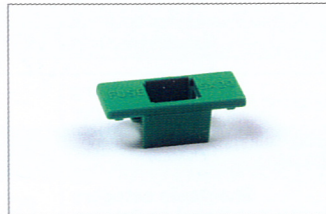
BS140ANA
CAPPUCCIO / COVER / CAPUCHON / DECKEL



Materiale / Material **PC - UL 94 V0**
Matériau / Material

Colore / Colour **Opaco / Opaque**
Couleur / Farbe

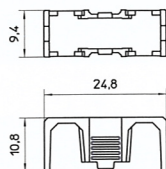
BS232
CAPPUCCIO / COVER / CAPUCHON / DECKEL



Materiale / Material **PA - UL94 V0**
Matériau / Material

Colore standard / Standard colour **Verde / Green**
Couleur standard / Standard Farbe **Vert / Grün**
Altri colori / Other colours **A richiesta / On demand**
Autres couleurs / Andere Farben **Sur demande / Auf Anfrage**

BS613
CAPPUCCIO / COVER / CAPUCHON / DECKEL



Materiale / Material **PA - UL94 V0**
Matériau / Material

Colore standard / Standard colour **Nero / Black**
Couleur standard / Standard Farbe **Noir / Schwarz**

Altri colori / Other colours **A richiesta / On demand**
Autres couleurs / Andere Farben **Sur demande / Auf Anfrage**

TABELLA DI CORRISPONDENZA DEGLI ACCESSORI
TABLEAU DE CORRESPONDANCE DES ACCESSOIRES

ACCESSORIES CORRESPONDANCE TABLE
TABELLE KORRESPONDENZZUBEHÖR

	PTF/15	PTF/15B	PTF/18	PTF/75	PTF/76	PTF/77	PTF/78
BS140NA	•	•					
BS140ANA	•	•					
BS232				•	•	•	•
BS613			•				