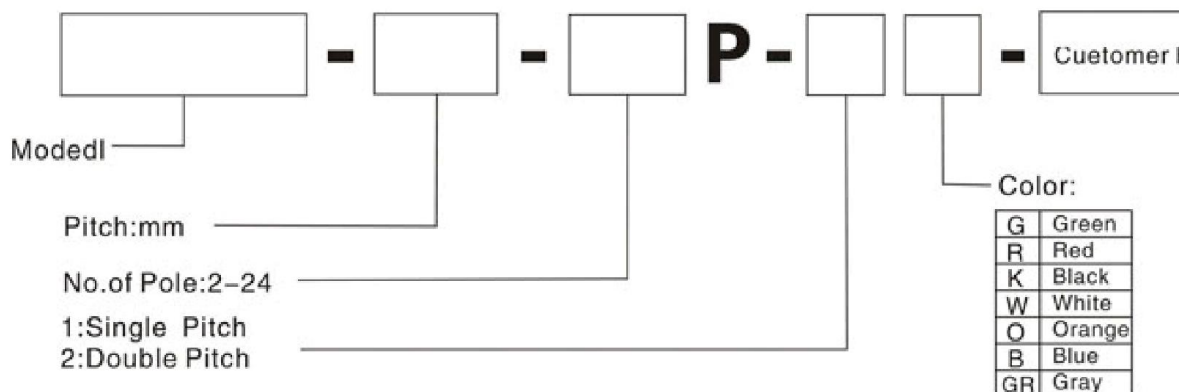




- **Product Name** : KF2EDGR-Y-3.50/3.81mm
- **Category** : Pluggable Terminal Blocks

Detailed

HOW TO ORDER



MATERIAL



Screw : -
Contact : -
Pin header : Brass, Tin plated
Housing : PA66, UL94V-0

ELECTRICAL

Rated voltage
Rated current
Contact resistance
Insulation resistance
Withstanding voltage
Wire range

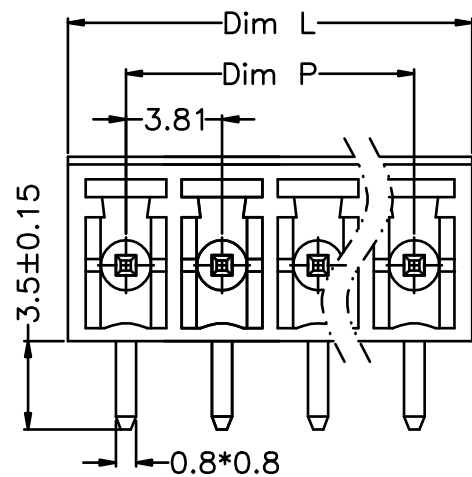
UL	IEC
300V	250V
8A	7A
20mΩ	
500MΩ/DC500V	
AC1500V/1min	
-	

MECHANICAL

Temp.rang
Max.soldering
Torque
Strip length

-40°C~+105°C
+250°C,5sec
-
-

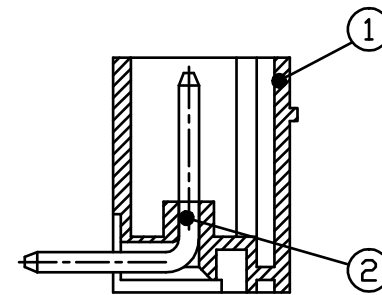
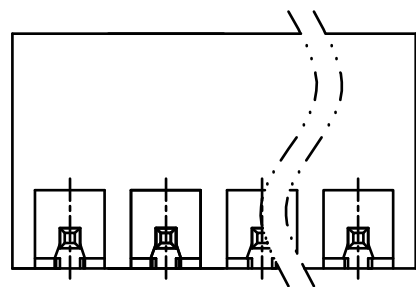
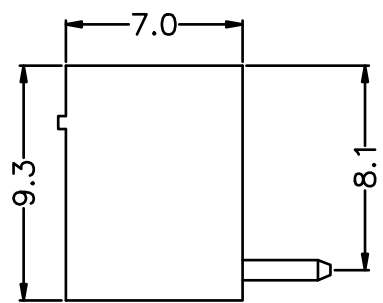
REV.	DESCRIPTION	DATE	DRAWN	APPROVED
A1	DWG.REL	2016/10/7	FANG	YANG



- Material
 - ØHousing : PA66, UL94V-0
 - ØPin header : Brass, Tin plated
- Electrical

	UL	IEC
Rated voltage :	300V	250V
Rated current :	8A	7A

Insulation resistance: 500MΩ/DC500V
Withstanding Voltage : AC1500V/1min
- Mechanical
 - Operating temperature: -40℃~+105℃
 - Soldering temperature: 250℃±5/5sec



HOW TO ORDER
KF2EDGR-Y-3.81-XXP-1 X-XXXXX

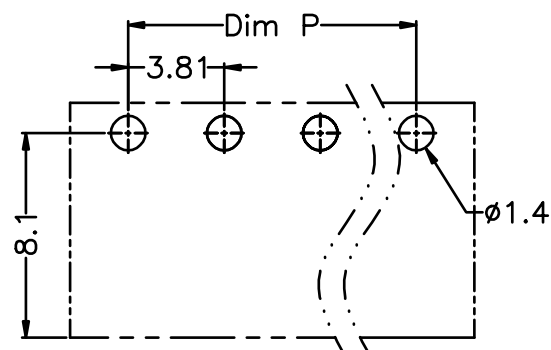
MODEL Pitch:mm No. of poles: 2~24P Color: G:Green R:Red K:Black W:White O:Orange B:Blue GR:Gray

1:Single Pitch
2:Double Pitch

Customer Request

N=Number of Poles
 Dim P=(N-1)x3.81
 Dim L=Nx3.81+0.8

Poles	Dim P	Dim L
2-6P	±0.10	±0.15
7-12P	±0.20	±0.20
13-18P	±0.25	±0.30
19-24P	±0.30	±0.40



P.C.B.LAYUOT

GENERAL TOLERANCE		ANGLE TOLERANCE	
X.	±0.5	X'	±5'
.X	±0.3	.X'	±3'
.XX	±0.1	.XX'	±1'

DRAWING TYPE	CUSTOMER		
SCALE	1:1	SHEET	1 OF 1
DRAWING NO.	XP0012016-xxxx		

PROJECTION		TITLE	KF2EDGR-Y-3.81-XXP	
UNITS	mm	SERIES	KF2EDGR-Y	
慈溪市凯峰电子有限公司 KAIFENG ELECTRONIC CIXI KAIFENG ELECTRONIC CO.,LTD				