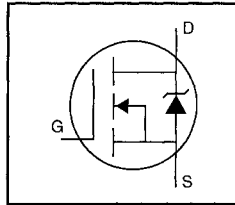


### HEXFET® Power MOSFET

- Dynamic  $dv/dt$  Rating
- For Automatic Insertion
- End Stackable
- Logic-Level Gate Drive
- $R_{DS(on)}$  Specified at  $V_{GS}=4V$  &  $5V$
- $175^{\circ}C$  Operating Temperature
- Fast Switching



$$V_{DSS} = 60V$$

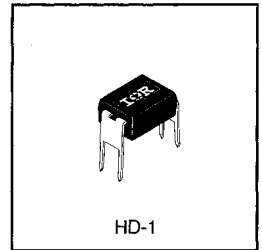
$$R_{DS(on)} = 0.10\Omega$$

$$I_D = 2.5A$$

### Description

Third Generation HEXFETs from International Rectifier provide the designer with the best combination of fast switching, ruggedized device design, low on-resistance and cost-effectiveness.

The 4-pin DIP package is a low cost machine-insertable case style which can be stacked in multiple combinations on standard 0.1 inch pin centers. The dual drain serves as a thermal link to the mounting surface for power dissipation levels up to 1 watt.



DATA SHEETS

### Absolute Maximum Ratings

|                              | Parameter                                  | Max.                  | Units          |
|------------------------------|--|-----------------------|----------------|
| $I_D$ @ $T_C = 25^{\circ}C$  | Continuous Drain Current, $V_{GS}$ @ 5.0 V | 2.5                   | A              |
| $I_D$ @ $T_C = 100^{\circ}C$ | Continuous Drain Current, $V_{GS}$ @ 5.0 V | 1.8                   |                |
| $I_{DM}$                     | Pulsed Drain Current ①                     | 20                    |                |
| $P_D$ @ $T_C = 25^{\circ}C$  | Power Dissipation                          | 1.3                   | W              |
|                              | Linear Derating Factor                     | 0.0083                | W/ $^{\circ}C$ |
| $V_{GS}$                     | Gate-to-Source Voltage                     | $\pm 10$              | V              |
| $E_{AS}$                     | Single Pulse Avalanche Energy ②            | 91                    | mJ             |
| $dv/dt$                      | Peak Diode Recovery $dv/dt$ ③              | 4.5                   | V/ns           |
| $T_J$                        | Operating Junction and                     | -55 to +175           | $^{\circ}C$    |
| $T_{STG}$                    | Storage Temperature Range                  |                       |                |
|                              | Soldering Temperature, for 10 seconds      | 300 (1.6mm from case) |                |

### Thermal Resistance

|                 | Parameter           | Min. | Typ. | Max. | Units         |
|-----------------|---------------------|------|------|------|---------------|
| $R_{\theta JA}$ | Junction-to-Ambient | —    | —    | 120  | $^{\circ}C/W$ |

**Electrical Characteristics @  $T_J = 25^\circ\text{C}$  (unless otherwise specified)**

|                                 | Parameter                            | Min. | Typ.  | Max. | Units    | Test Conditions   |
|---------------------------------|--------------------------------------|------|-------|------|----------|---|
| $V_{(BR)DSS}$                   | Drain-to-Source Breakdown Voltage    | 60   | —     | —    | V        | $V_{GS}=0V, I_D=250\mu A$   |
| $\Delta V_{(BR)DSS}/\Delta T_J$ | Breakdown Voltage Temp. Coefficient  | —    | 0.060 | —    | V/°C     | Reference to $25^\circ\text{C}, I_D=1\text{mA}$                     |
| $R_{DS(on)}$                    | Static Drain-to-Source On-Resistance | —    | —     | 0.10 | $\Omega$ | $V_{GS}=5.0V, I_D=1.5A$ ④   |
|                                 |                                      | —    | —     | 0.14 |          | $V_{GS}=4.0V, I_D=1.3A$ ④   |
| $V_{GS(th)}$                    | Gate Threshold Voltage               | 1.0  | —     | 2.0  | V        | $V_{DS}=V_{GS}, I_D=250\mu A$                                       |
| $g_{fs}$                        | Forward Transconductance             | 3.7  | —     | —    | S        | $V_{DS}=25V, I_D=1.5A$ ④  |
| $I_{DSS}$                       | Drain-to-Source Leakage Current      | —    | —     | 25   | $\mu A$  | $V_{DS}=60V, V_{GS}=0V$   |
|                                 |                                      | —    | —     | 250  |          | $V_{DS}=48V, V_{GS}=0V, T_J=150^\circ\text{C}$                      |
| $I_{GSS}$                       | Gate-to-Source Forward Leakage       | —    | —     | 100  | nA       | $V_{GS}=10V$  |
|                                 | Gate-to-Source Reverse Leakage       | —    | —     | -100 |          | $V_{GS}=-10V$   |
| $Q_g$                           | Total Gate Charge                    | —    | —     | 18   | nC       | $I_D=17A$   |
| $Q_{gs}$                        | Gate-to-Source Charge                | —    | —     | 4.5  |          | $V_{DS}=48V$  |
| $Q_{gd}$                        | Gate-to-Drain ("Miller") Charge      | —    | —     | 12   |          | $V_{GS}=5.0V$ See Fig. 6 and 13 ④                                   |
| $t_{d(on)}$                     | Turn-On Delay Time                   | —    | 11    | —    | ns       | $V_{DD}=30V$  |
| $t_r$                           | Rise Time                            | —    | 110   | —    |          | $I_D=17A$   |
| $t_{d(off)}$                    | Turn-Off Delay Time                  | —    | 23    | —    |          | $R_G=9.0\Omega$   |
| $t_f$                           | Fall Time                            | —    | 41    | —    |          | $R_D=1.7\Omega$ See Figure 10 ④                                     |
| $L_D$                           | Internal Drain Inductance            | —    | 4.0   | —    | nH       | Between lead, 6 mm (0.25in.) from package and center of die contact |
| $L_S$                           | Internal Source Inductance           | —    | 6.0   | —    |          |   |
| $C_{iss}$                       | Input Capacitance                    | —    | 870   | —    | pF       | $V_{GS}=0V$   |
| $C_{oss}$                       | Output Capacitance                   | —    | 360   | —    |          | $V_{DS}=25V$  |
| $C_{rss}$                       | Reverse Transfer Capacitance         | —    | 53    | —    |          | $f=1.0\text{MHz}$ See Figure 5                                      |

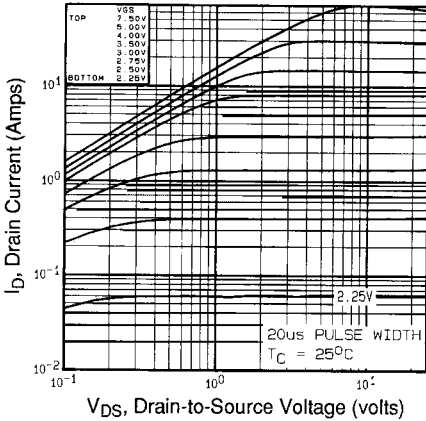

**Source-Drain Ratings and Characteristics**

|          | Parameter                              | Min.  | Typ. | Max. | Units   | Test Conditions  |
|----------|--|---|------|------|---------|--|
| $I_S$    | Continuous Source Current (Body Diode) | —   | —    | 2.5  | A       | MOSFET symbol showing the integral reverse p-n junction diode. |
| $I_{SM}$ | Pulsed Source Current (Body Diode) ①   | —   | —    | 20   |         |  |
| $V_{SD}$ | Diode Forward Voltage                  | —   | —    | 1.5  | V       | $T_J=25^\circ\text{C}, I_S=2.5A, V_{GS}=0V$ ④                  |
| $t_{rr}$ | Reverse Recovery Time                  | —   | 110  | 260  | ns      | $T_J=25^\circ\text{C}, I_F=17A$                                |
| $Q_{rr}$ | Reverse Recovery Charge                | —   | 0.49 | 1.5  | $\mu C$ | $di/dt=100A/\mu s$ ④   |
| $t_{on}$ | Forward Turn-On Time                   | Intrinsic turn-on time is negligible (turn-on is dominated by $L_S+L_D$ ) |      |      |         |  |

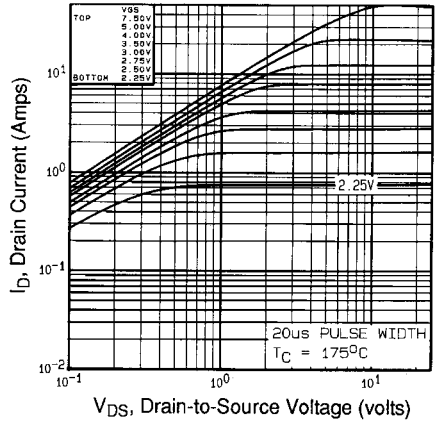
Notes:

① Repetitive rating; pulse width limited by max. junction temperature (See Figure 11)

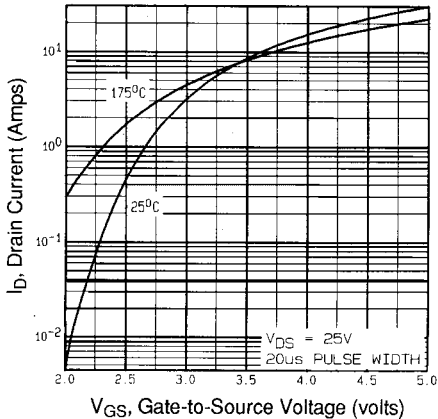
③  $I_{SD} \leq 17A, di/dt \leq 140A/\mu s, V_{DD} \leq V_{(BR)DSS}, T_J \leq 175^\circ\text{C}$ ②  $V_{DD}=25V$ , starting  $T_J=25^\circ\text{C}, L=16\text{mH}$   
 $R_G=25\Omega, I_{AS}=2.5A$  (See Figure 12)④ Pulse width  $\leq 300 \mu s$ ; duty cycle  $\leq 2\%$ .



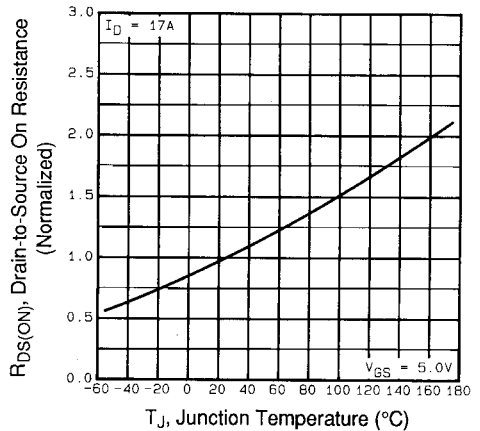
**Fig 1.** Typical Output Characteristics,  
 $T_C=25^{\circ}\text{C}$



**Fig 2.** Typical Output Characteristics,  
 $T_C=175^{\circ}\text{C}$

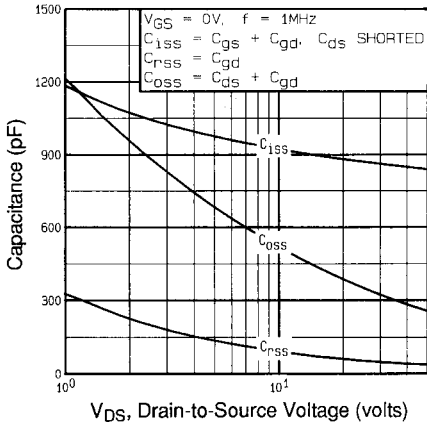


**Fig 3.** Typical Transfer Characteristics

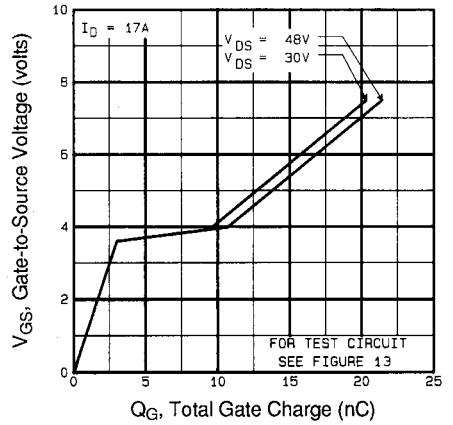


**Fig 4.** Normalized On-Resistance  
Vs. Temperature

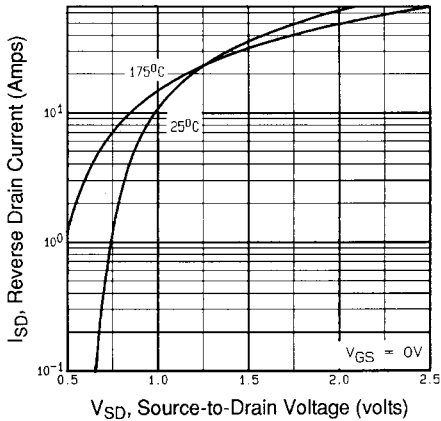
DATA SHEETS



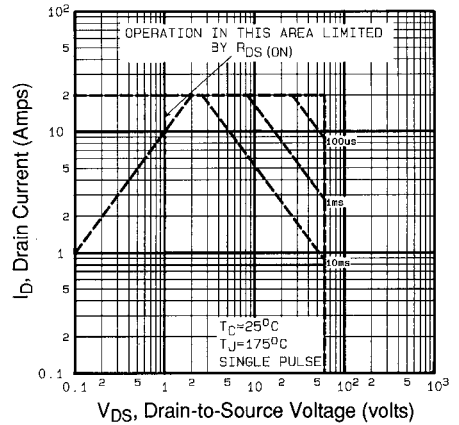
**Fig 5.** Typical Capacitance Vs. Drain-to-Source Voltage



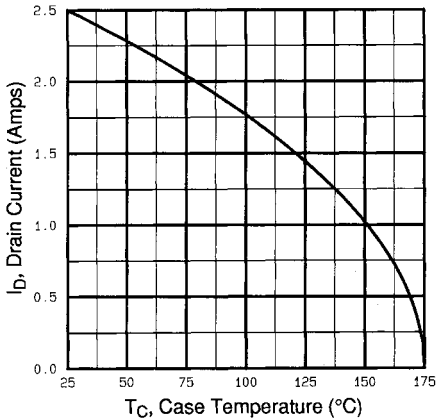
**Fig 6.** Typical Gate Charge Vs. Gate-to-Source Voltage



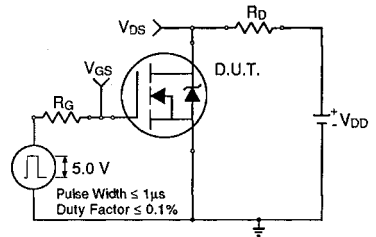
**Fig 7.** Typical Source-Drain Diode Forward Voltage



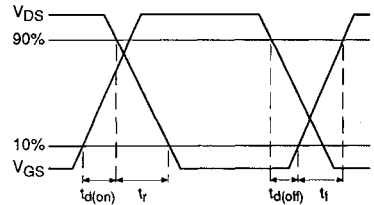
**Fig 8.** Maximum Safe Operating Area



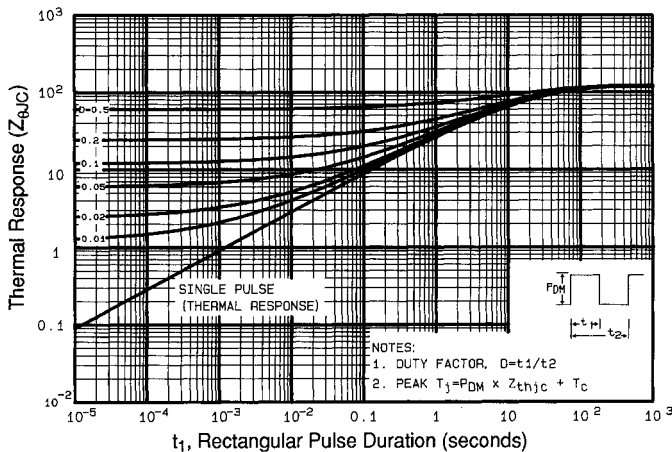
**Fig 9.** Maximum Drain Current Vs. Case Temperature



**Fig 10a.** Switching Time Test Circuit



**Fig 10b.** Switching Time Waveforms



**Fig 11.** Maximum Effective Transient Thermal Impedance, Junction-to-Case

DATA SHEETS

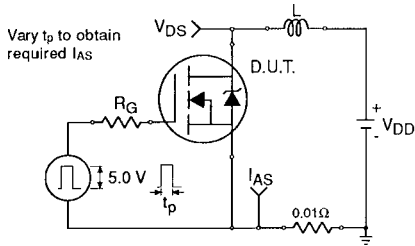


Fig 12a. Unclamped Inductive Test Circuit

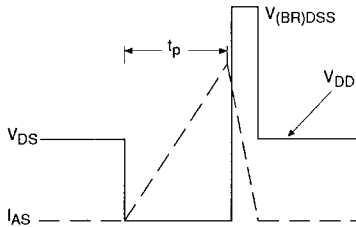


Fig 12b. Unclamped Inductive Waveforms

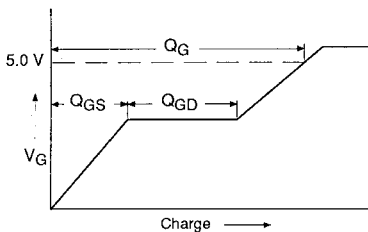


Fig 13a. Basic Gate Charge Waveform

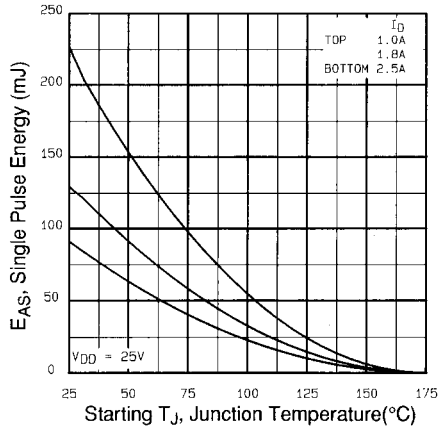


Fig 12c. Maximum Avalanche Energy Vs. Drain Current

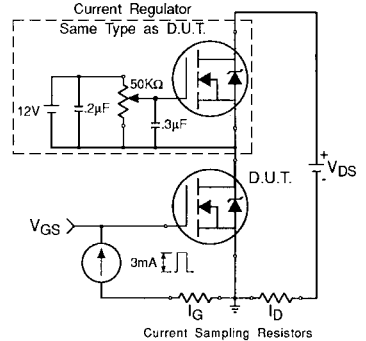


Fig 13b. Gate Charge Test Circuit

Appendix A: Figure 14, Peak Diode Recovery  $dv/dt$  Test Circuit – See page 1505

Appendix B: Package Outline Mechanical Drawing – See page 1507

Appendix C: Part Marking Information – See page 1515