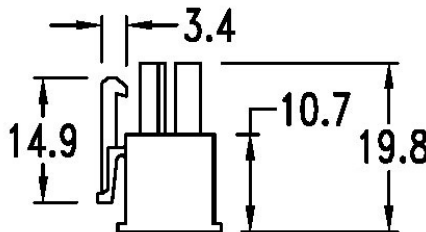
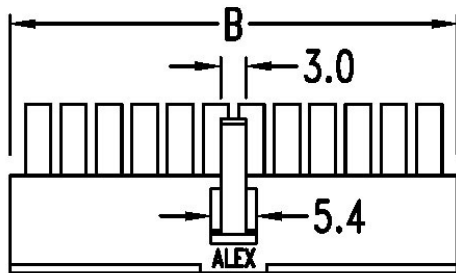


Use Crimp Terminals
JS-A-4256-TXX, JS-A-4257-TX



SPECIFICATIONS

Current Rating: 9 A
Voltage Rating: 600V (R.M.S.)
Insulation Resistance: DC 500V 1000MΩ min.
Withstanding: 1500V AC/minute
Operating Temp: -40°C ~ +105°C

Wire Size AWG	Circuits			
	2	4,6	8,10	12-24
#18	9 A	8 A	7 A	6 A
#20	7 A	6 A	5 A	5 A
#22	5 A	4 A	4 A	4 A
#24	4 A	3 A	3 A	3 A



Dimensions								
Circuits	A	B	Circuits	A	B	Circuits	A	B
2		5.7	10	16.8	22.5	18	33.6	39.3
4	4.2	9.9	12	21.0	26.7	20	37.8	43.6
6	8.4	14.1	14	25.2	30.9	22	42.0	47.8
8	12.6	18.3	16	29.4	35.1	24	46.2	52.0

Series	Type	Positions	Options
JS-A	9357	XX	XX
Connectors	Type 9357	02-12 Dual Row Housing See Chart & Spec	Blank=94V-2 V0=94V-0

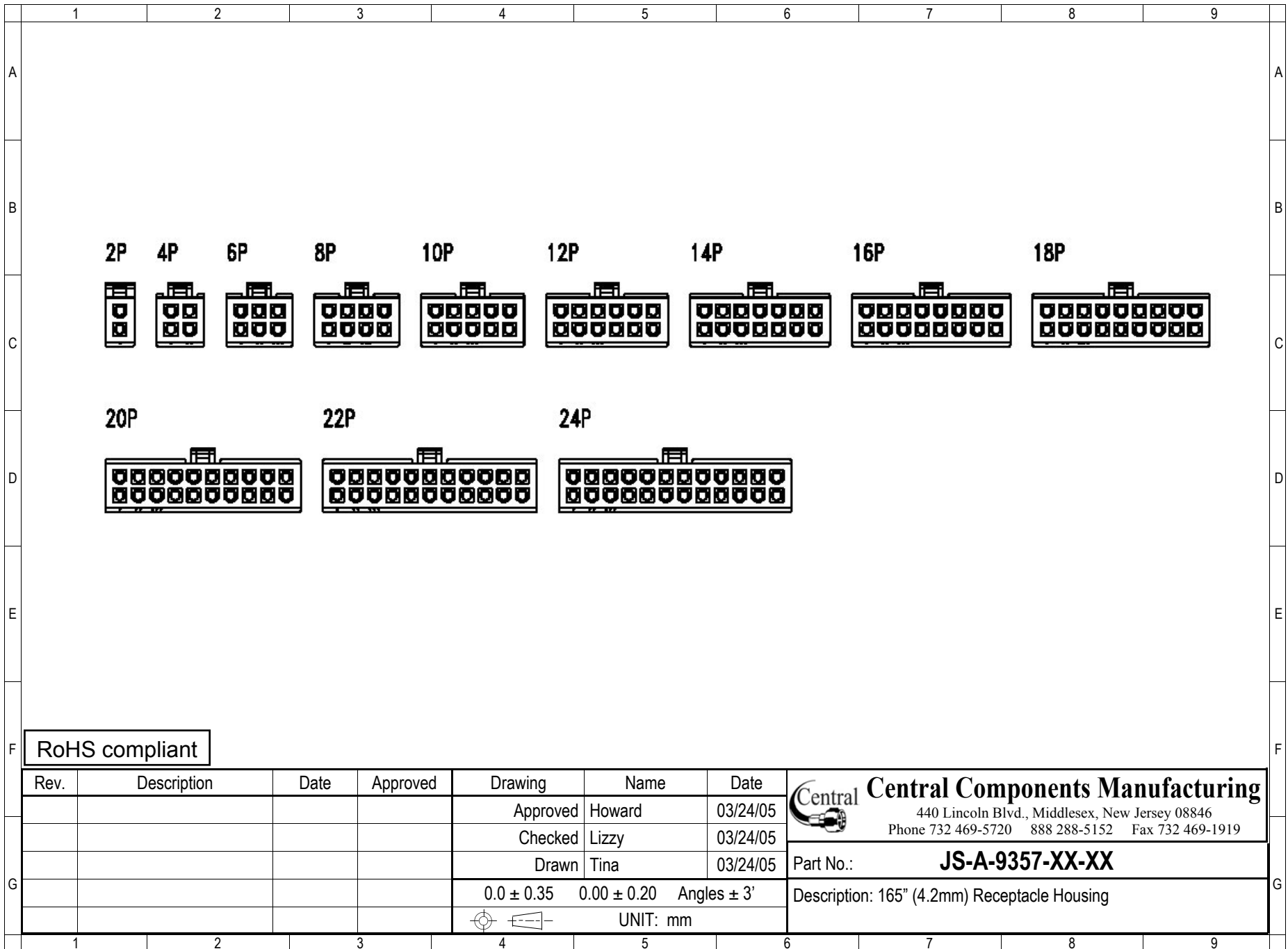
RoHS compliant

Rev.	Description	Date	Approved	Drawing	Name	Date
				Approved	Howard	03/24/05
				Checked	Lizzy	03/24/05
				Drawn	Tina	03/24/05
				0.0 ± 0.35	0.00 ± 0.20	Angles ± 3'
				UNIT: mm		

Central Components Manufacturing
440 Lincoln Blvd., Middlesex, New Jersey 08846
Phone 732 469-5720 888 288-5152 Fax 732 469-1919

Part No.: **JS-A-9357-XX-XX**

Description: 165" (4.2mm) Receptacle Housing



RoHS compliant

Rev.	Description	Date	Approved	Drawing	Name	Date
				Approved	Howard	03/24/05
				Checked	Lizzy	03/24/05
				Drawn	Tina	03/24/05
				0.0 ± 0.35	0.00 ± 0.20	Angles ± 3'
					UNIT: mm	

 **Central Components Manufacturing**
 440 Lincoln Blvd., Middlesex, New Jersey 08846
 Phone 732 469-5720 888 288-5152 Fax 732 469-1919

Part No.: **JS-A-9357-XX-XX**

Description: 165" (4.2mm) Receptacle Housing