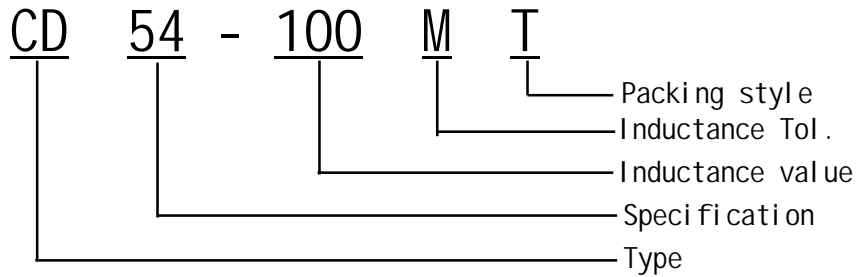


# SMD Power Inductors CD54 Series

## 贴片功率电感CD54 系列

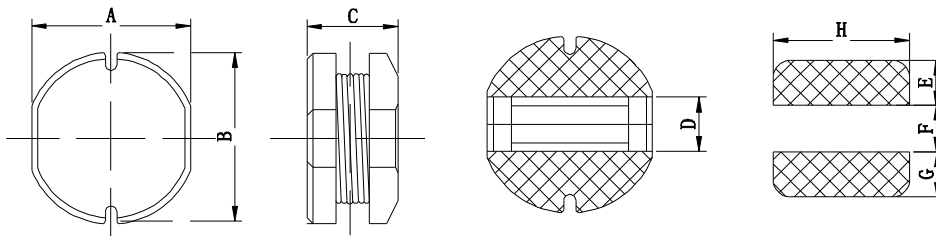
### I .Ordering Code:



※ Inductance Tol. J:  $\pm 5\%$ , K:  $\pm 10\%$ , M:  $\pm 20\%$ , N:  $\pm 30\%$ .

※ Inductance value. 1R0: 1.0uH, 100: 10uH, 101: 100uH, 102: 1000uH.

### II .Configuration&Dimensions: (mm)



Size	A	B	C(max)	D	E	F	G	H
CD54	5.20 $\pm$ 0.30	5.80 $\pm$ 0.30	4.80	1.50	2.60	1.40	2.60	5.80

### III.Materials :

- a.Core: Ferrite DR core
- b.Wire: Enamelled copper wire
- c.Terminal: Cu/Sn
- d. Encapsulate: Epoxy novolac molding compound
- e. Remark: Products comply with RoHS' requirements

### IV.General Specification :

- a.Storage temp. : -40 $^{\circ}$ C ----+125 $^{\circ}$ C
- b.Operating : -40 $^{\circ}$ C ----+105 $^{\circ}$ C
- c.Temp. rise : 40 $^{\circ}$ C Max. at rated current.

## V. Electrical Characteristics · CD54 Series

Part No.	L (uH)	Test Freq .(KHZ)	Tolerance	D.C.R( $\Omega$ )	Rated Current
				MAX	(A)
CD54-1R0NT	1.00	100K/0.25V	$\pm 30\%$	13.0m	5.40
CD54-1R5MT	1.50	100K/0.25V	$\pm 30\%$	16.9m	4.70
CD54-1R8MT	1.80	100K/0.25V	$\pm 30\%$	19.5m	4.50
CD54-2R2MT	2.20	100K/0.25V	$\pm 30\%$	22.1m	4.00
CD54-2R7MT	2.70	100K/0.25V	$\pm 30\%$	25.20	3.80
CD54-3R3MT	3.30	100K/0.25V	$\pm 30\%$	31.2m	3.70
CD54-3R9MT	3.90	100K/0.25V	$\pm 30\%$	36.4m	3.20
CD54-4R7MT	4.7	100K/0.25V	$\pm 20\%$	52.0m	3.10
CD54-5R6MT	5.6	100K/0.25V	$\pm 20\%$	54.6m	2.80
CD54-6R8MT	6.8	100K/0.25V	$\pm 20\%$	58.5m	2.40
CD54-8R2MT	8.2	100K/0.25V	$\pm 20\%$	62.4m	2.00
CD54-100MT	10.0	1.0K/0.25V	$\pm 20\%$	87.9m	1.42
CD54-120MT	12.0	1.0K/0.25V	$\pm 20\%$	75.4m	1.38
CD54-150MT	15.0	1.0K/0.25V	$\pm 20\%$	0.105	1.28
CD54-180MT	18.0	1.0K/0.25V	$\pm 20\%$	0.117	1.22
CD54-220MT	22.0	1.0K/0.25V	$\pm 20\%$	0.169	1.10
CD54-270MT	27.0	1.0K/0.25V	$\pm 20\%$	0.153	0.950
CD54-330MT	33.0	1.0K/0.25V	$\pm 20\%$	0.208	0.860
CD54-390MT	39.0	1.0K/0.25V	$\pm 20\%$	0.215	0.780
CD54-470MT	47.0	1.0K/0.25V	$\pm 20\%$	0.355	0.710
CD54-560MT	56.0	1.0K/0.25V	$\pm 20\%$	0.377	0.660
CD54-680MT	68.0	1.0K/0.25V	$\pm 20\%$	0.390	0.600
CD54-820MT	82.0	1.0K/0.25V	$\pm 20\%$	0.416	0.570
CD54-101MT	100.0	1.0K/0.25V	$\pm 20\%$	0.611	0.510
CD54-121MT	120.0	1.0K/0.25V	$\pm 20\%$	0.754	0.470
CD54-151MT	150.0	1.0K/0.25V	$\pm 20\%$	0.845	0.380
CD54-181MT	180.0	1.0K/0.25V	$\pm 20\%$	1.04	0.360
CD54-221KT	220.0	1.0K/0.25V	$\pm 10\%$	1.45	0.340
CD54-271KT	270.0	1.0K/0.25V	$\pm 10\%$	1.51	0.310
CD54-331KT	330.0	1.0K/0.25V	$\pm 10\%$	1.76	0.280
CD54-391KT	390.0	1.0K/0.25V	$\pm 10\%$	2.08	0.260
CD54-471KT	470.0	1.0K/0.25V	$\pm 10\%$	2.99	0.240
CD54-561KT	560.0	1.0K/0.25V	$\pm 10\%$	3.12	0.220
CD54-681KT	680.0	1.0K/0.25V	$\pm 10\%$	3.90	0.200

### VI. 额定电流 Reted Current:

电感值下降至初始值的10%或温度上升至40℃时的直流电流值中的最小值。(环境温度20℃)

This indicates the value of current when the inductance is 10% lower than its initial value at D.C. superposition or D.C. current when T=40℃ whichever is lower. (Ta=20℃)

### VII. 无铅制品 Lead-free

VIII. 测试仪器 Test instrument : HP4284A, 502BC, CH1062A.