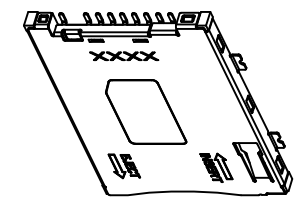
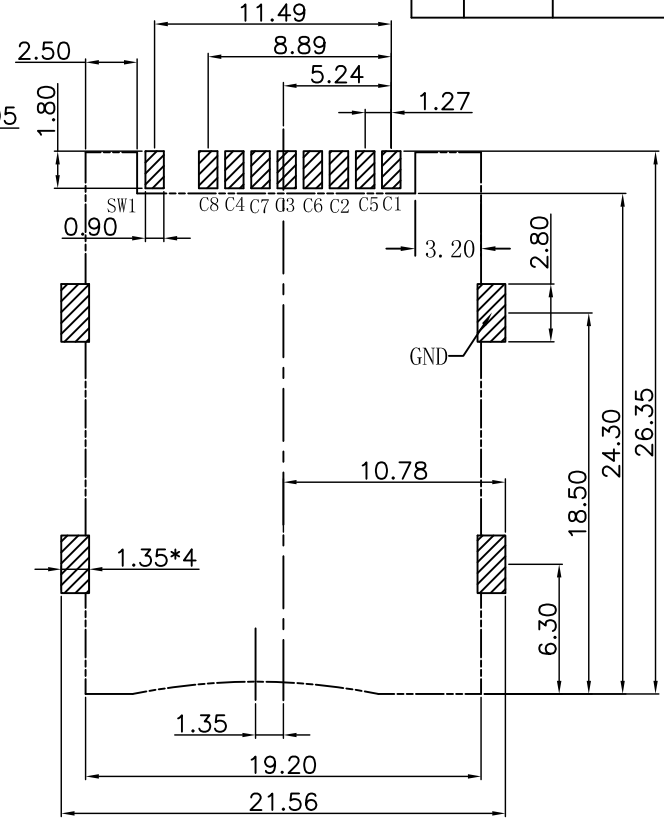
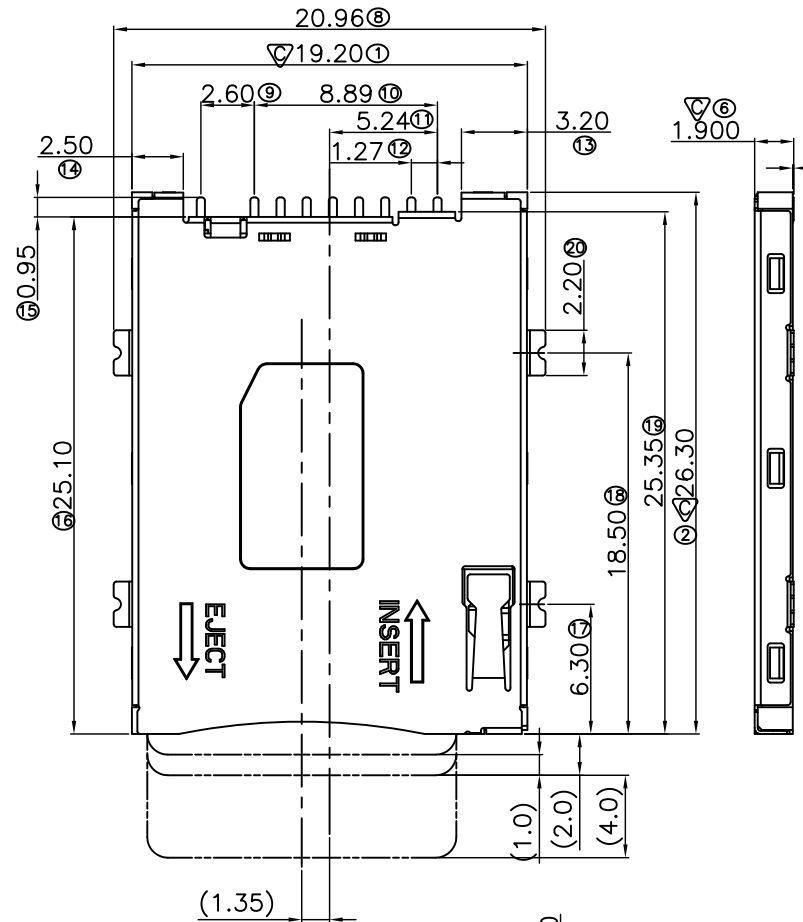
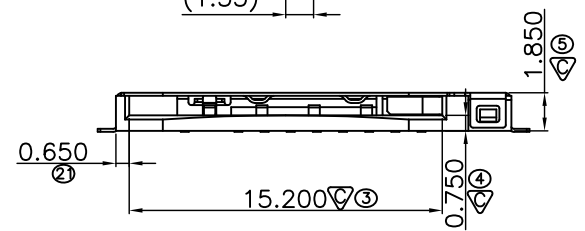
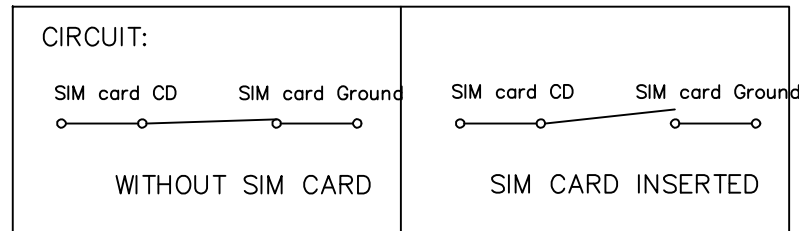


REV	ECN NO	DESCRIPTION	DATE	DRAW	APPROVE



P.C.B LAYOUT

SIM pin assignment	
PIN#	Name
C1	VCC
C2	RST
C3	CLK
C4	Reserved
C5	GND
C6	VPP
C7	I/O
C8	Reserved

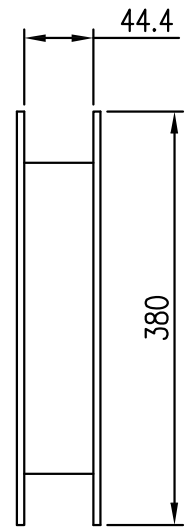
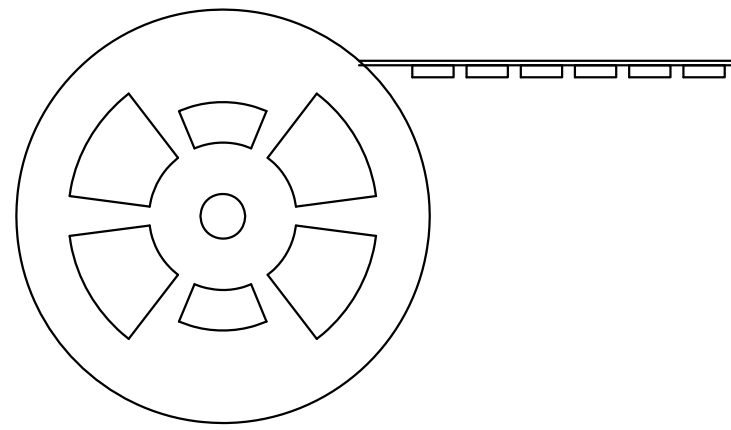
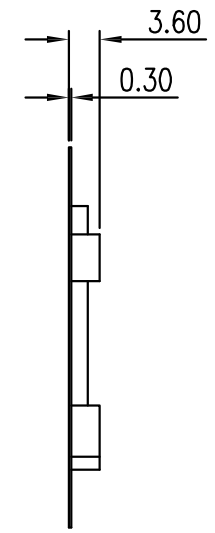
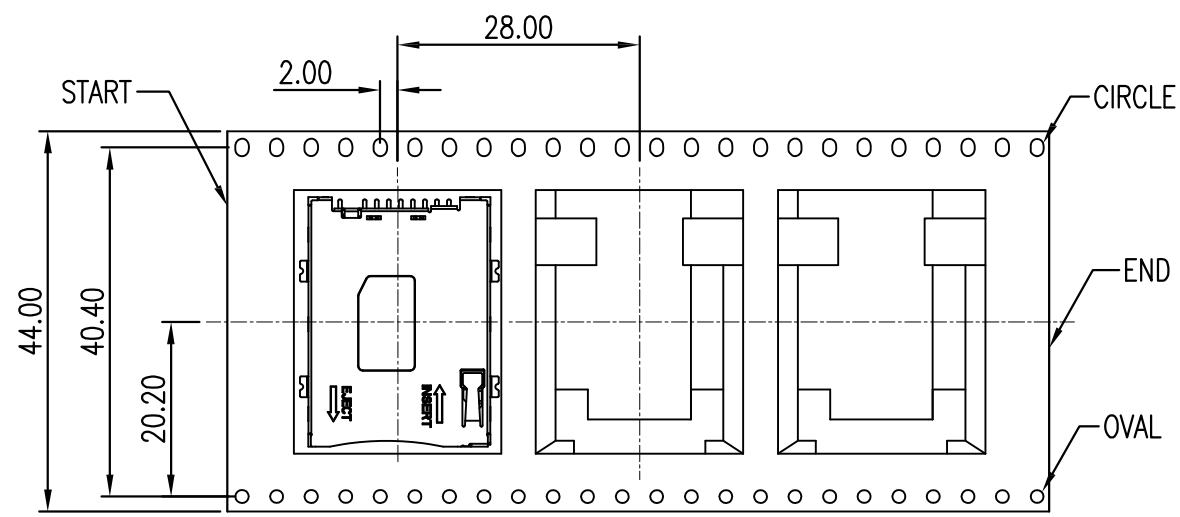


NOTE:
 1. MATERIAL:
 1.1 HOUSING: THERMOPLASTIC
 COLOR: BLACK.
 1.2 CONTACT: PHOSPHOR
 1.3 SHELL: SUS304

BY QC DIM.

頁數 SIZE	A 4	單位 UNIT	M M	公差 GENERAL TOLERANCE			
日期 DATE	2010-03-11	專案 PROJ.		X.±0.50	X.*±5°		
繪圖 DRAWN		版本 REV.	P0	X.±0.30	X.*±2°		
檢查 CHECKED		圖紙 SHEET	1/1	.XX±0.20	.XX*±1°		
核准 APPROVE		比例 SCALE	1:1	.XXX±0.10	.XXX*±0.5°		
				成品	D		
						Memory Card Connector	
						SPPN08-A0-1080	

版次 REV	變更通知單號 ECN NO	說明 DESCRIPTION	日期 DATE	修改 DRAW	核准 APPROVE



800 PEICES PER REEL

頁 面 S I Z E	A 4	單 位 U N I T	M M	公 差 GENERAL TOLERANCE		名 稱 T I T L E	Memory Card Connector	
日 期 D A T E		角 法 P R O J.		X.±0.50	X.*±5°		圖 號 D W G N O.	SPPN08-A0-1080
制 圖 D R A W I N	LI JUN	版 本 R E V.	P0	X.±0.30	X.*±2°	料 號 P R A T N O.		
審 核 C H E C K E D		張 數 S H E E T	1/1	.XX±0.20	.XX*±1°			
核 准 A P P R O V E		比 例 S C A L E	1:1	.XXX±0.10	.XXX*±0.5°			
				成 品 圖				

深圳市恒辉塑料有限公司

LCP VECTRA E471i (ASTM)

项目	单位	测试方法	高耐热, 高流动
			E471i
			低翘曲性
颜色			VF2201/BK210P/BK211P
ISO(JIS)材质表示		ISO11469 (JIS K6999)	>LCP-(GF+MD) 35<
密度	g/cm ³	ISO 1183	1.67
拉伸强度	MPa	ASTM D638	140
拉伸率	%	ASTM D638	2.3
弯曲强度	MPa	ISO 178	195
弯曲模量	MPa	ISO 178	13,500
弯曲应变	%	ISO 178	2.5
简支梁冲击强度 (有缺口)	kJ/m ²	ISO 179/1eA	20
负荷变形温度 (1.8MPa)	°C	ISO 75-1, 2	265
绝缘破坏强度 (1mmt)	kV/mm	IEC 60243-1	47
绝缘破坏强度 (3mmt)	kV/mm	IEC 60243-1	25
体积电阻率	Ω · cm	IEC 60093	1.0 x 10 ¹⁶
介电常数 (1kHz)		IEC 60250	4.3
介电常数 (1MHz)		IEC 60250	3.8
介电损耗角正切 (1kHz)		IEC 60250	0.018
介电损耗角正切 (1MHz)		IEC 60250	0.032
耐导电径迹	V	IEC 60112	150
耐电弧性	s		176
成型收缩率 (80□×1mmt、流动方向、注射压力 60MPa)	%		0.06
成型收缩率 (80□×1mmt、垂直方向、注射压力 60MPa)	%		0.43
成型收缩率 (80□×1mmt、流动方向、注射压力 79MPa)	%		-
成型收缩率 (80□×1mmt、垂直方向、注射压力 79MPa)	%		-
阻燃性		UL94	V-0
U L 发行的黄卡			E106764

Component - Plastics

E106764

POLYPLASTICS CO LTD

VECTRA DIV, 18-1 KONAN 2-CHOME, MINATO-KU, TOKYO 108-8280 JP

E471i(d)

Liquid Crystal Polymer (LCP), "VECTRA", furnished as pellets

	Min Thk	Flame			RTI	RTI	RTI
Color	(mm)	Class	HWI	HAI	Elec	Imp	Str
NC, BK	0.1	V-0	-	-	130	130	130
	0.8	V-0	-	-	130	130	130
ALL	1.5	V-0	-	-	130	130	130
	3.0	V-0	-	-	130	130	130

Comparative Tracking Index (CTI): **3**

Dimensional Stability (%): -

High-Voltage Arc Tracking Rate (HVTR): -

High Volt, Low Current Arc Resis (D495): -

Dielectric Strength (kV/mm): -

Volume Resistivity (10^x ohm-cm) : -

(d) - Virgin and regrind up to 50% by weight incl., have the same basic material characteristics in NC and BK with a minimum thickness of 0.80mm.

ANSI/UL 94 small-scale test data does not pertain to building materials, furnishings and related contents. ANSI/UL 94 small-scale test data is intended solely for determining the flammability of plastic materials used in the components and parts of end-product devices and appliances, where the acceptability of the combination is determined by UL.

Report Date: 2000-01-31

Last Revised: 2012-02-10

Underwriters Laboratories Inc®

IEC and ISO Test Methods

Test Name	Test Method	Units	Thickness	
			Tested (mm)	Value
Flammability	IEC 60695-11-10	Class (color)	0.1	V-0 (NC, BK)
			0.8	V-0 (NC, BK)
			1.5	V-0 (ALL)
			3.0	V-0 (ALL)
Glow-Wire Flammability (GWFI)	IEC 60695-2-12	C	-	-
Glow-Wire Ignition (GWIT)	IEC 60695-2-13	C	-	-
IEC Comparative Tracking Index	IEC 60112	Volts (Max)	-	-
IEC Ball Pressure	IEC 60695-10-2	C	-	-
ISO Heat Deflection (1.80 MPa)	ISO 75-2	C	-	-
ISO Tensile Strength	ISO 527-2	MPa	-	-
ISO Flexural Strength	ISO 178	MPa	-	-
ISO Tensile Impact	ISO 8256	kJ/m^2	-	-
ISO Izod Impact	ISO 180	kJ/m^2	-	-
ISO Charpy Impact	ISO 179-2	kJ/m^2	-	-

Underwriters Laboratories Inc®