

CFPS-72, -73 SMD CLOCK OSCILLATORS

ISSUE 11; 1 NOVEMBER 2008 - RoHS 2002/95/EC

Description

- Surface mount oscillators in a ceramic package with a hermetically sealed metal lid available in two voltages

Fast Make Capability

- Please see CFPP-72, 73 series Programmable Oscillators for nearest equivalent fast make parts

Package Outline

- 7 x 5mm SMD ceramic package

Frequency Range

- 1.25 to 160MHz

Output Compatibility & Load

- Tri-state HCMOS/TTL (5.0V) (CFPS-72)
- Tri-state HCMOS (3.3V) (CFPS-73)

Maximum Capacitive Load	
1.5MHz to 50MHz	50pF max
>50MHz to 80MHz	30pF max
>80MHz to 160MHz	15pF max

Frequency Stabilities

- $\pm 20\text{ppm}$, $\pm 25\text{ppm}$, $\pm 50\text{ppm}$, $\pm 100\text{ppm}$ (inclusive of supply voltage and output load variations over the operating temperature range)

Operating Temperature Range

- 0 to 70°C (CFPS-72, -73)
- 40 to 85°C (CFPS-72I, -73I)

Storage Temperature Range

- 55 to 125°C

Tri-state Operation

- Logic '1' (2.2V min) to pad 1 enables oscillator output
- Logic '0' to pad 1 (0.8V max) disables oscillator output; when disabled the oscillator output goes to the high impedance state
- No connection to pad 1 enables oscillator output

Marking Includes

- Model Number + Frequency Stability Code + Frequency

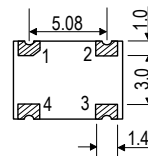
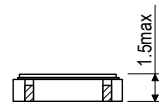
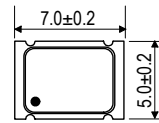
Packaging

- Bulk or Tape and Reel

Minimum Order Information Required

- Frequency + Model Number + Operating Temperature Code (if applicable) + Frequency Stability

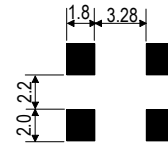
Outline (mm)



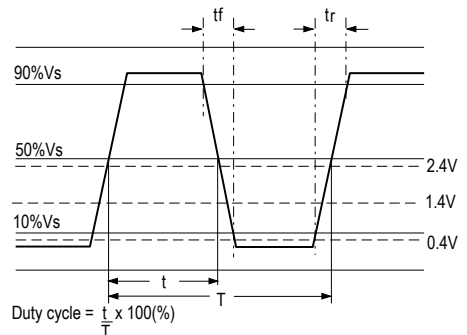
Pad Connections

- N/C or Enable/Disable
- GND
- Output
- +Vs

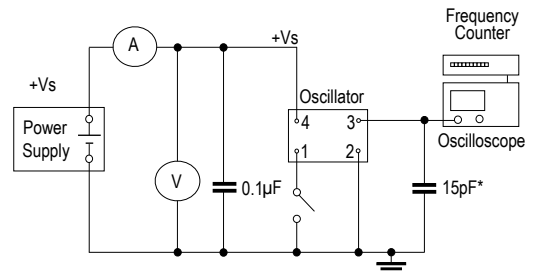
Solder pad layout



Output Waveform



Test Circuit



*Inclusive of jigging and equipment capacitance

CLOCK OSCILLATORS

Electrical Specifications - maximum limiting values

Frequency Range	Frequency Stability	Supply Voltage	Supply Current	Rise Time (tr)	Fall Time (tf)	Duty Cycle	Model Number
1.25 to 35.0MHz	±20ppm, *	3.3V ±10%	15mA	6ns	6ns	45/55%	CFPS-73, CFPS-731
>35.0 to 70.0MHz			30mA				
>70.0 to 160.0MHz			40mA				
1.25 to 20.0MHz	±25ppm, ±50ppm, ±100ppm	5.0V ±10%	20mA				CFPS-72, CFPS-721
>20.0 to 35.0MHz			30mA				
>35.0 to 70.0MHz			50mA				
>70.0 to 160.0MHz			70mA				

Ordering Example _____ 24.0MHz CFPS-73 C

Frequency _____

Model No. _____

Operating Temperature Code: I= -40 to 85°C; Not applicable for 0 to 70°C _____

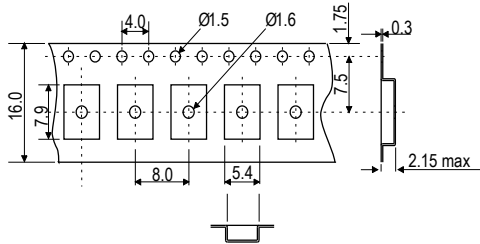
Frequency Stability: A = ±25ppm; B = ±50ppm; C = ±100ppm; G = ±20ppm _____

*Note: Code IG, ±20ppm over -40 to 85°C is not available

Please note that the rise and fall times listed are the maximum values we specify to cover various frequency breaks. In practice the actual values are generally lower depending upon the spot frequency chosen. For typical values please contact our sales office.

CLOCK
OSCILLATORS

Tape (mm)



Reel (mm)

