

Application	Interrupted	Uninterrupted
Thermal Current Rating (¹ th)	▶	80A
Intermittent Current Rating:		
30% Duty	▶	145A
40% Duty	▶	125A
50% Duty	▶	115A
60% Duty	▶	105A
70% Duty	▶	95A
Rated Fault Current Breaking Capacity (¹ cn) 5ms Time Constant: (in accordance with UL583*)		
PC60	▶	400A at 48V D.C.
PC60B	▶	400A at 96V D.C.
Rated Fault Current Breaking Capacity (¹ cn) Resistive Load: (in accordance with UL583*)		
PC60	▶	120A at 60V D.C.
PC60B	▶	120A at 96V D.C.
Maximum Recommended Contact Voltages (U _e):		
PC60	▶	48V D.C. 60V D.C.
PC60B	▶	96V D.C. 120V D.C.
Typical Voltage Drop per pole across New Contacts at 80A	▶	40mV
Mechanical Durability	▶	>3 x 10 ⁶ Cycles
Coil Voltage Available (U _s) (Rectifier board required for A.C.)	▶	From 6 to 130V D.C.
Coil Power Dissipation:		
Highly Intermittent Rated Types	▶	14 - 21 Watts
Intermittently Rated types	▶	10 - 14 Watts
Prolonged Rated Types	▶	7 - 10 Watts
Continuously Rated Types	▶	5 - 7 Watts
Maximum Pull-In Voltage (Coil at 20° C) Guideline:		
Highly Intermittent Rated types (Max 25% Duty Cycle)	▶	60% U _s
Intermittently Rated types (Max 70% Duty Cycle)	▶	60% U _s
Prolonged Operation (Max 90% Duty Cycle)	▶	60% U _s
Continuously Rated Types (100% Duty Cycle)	▶	66% U _s
Drop-Out Voltage Range	▶	10 - 25% U _s
Typical Pull-In Time	▶	15ms
Typical Drop-Out Time (N/O Contacts to Open):		
Without Suppression	▶	6ms
With Diode Suppression	▶	35ms
With Diode and Resistor (Subject to resistance value)	▶	8 - 20ms
Typical Contact Bounce Period	▶	3ms
Operating Ambient Temperature	▶	- 40°C to + 60°C
Guideline Contactor Weight:		
PC60	▶	190 gms
With Auxiliary	▶	+ 20 gms
With Blowouts	▶	+ 8 gms
Auxiliary Details		
Auxiliary Thermal Current Rating	▶	5A
Auxiliary Contact Switching Capabilities (Resistive Load):		
	▶	5A at 24V D.C.
	▶	1A at 60V D.C.
	▶	0.5A at 120V D.C.
	▶	0.25A at 240V D.C.
Advised Connection Sizes for Maximum Continuous Current		
Circuit Board Tracks	▶	Rated suitable for Application
Key: ▶ = Interrupted ▲ = Uninterrupted		
Note: Where applicable values shown are at 20° C		
* Please check our web site for product UL status		

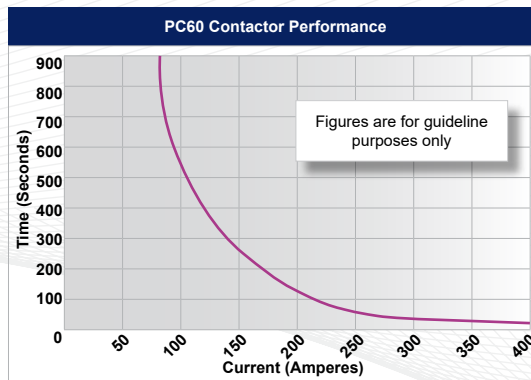
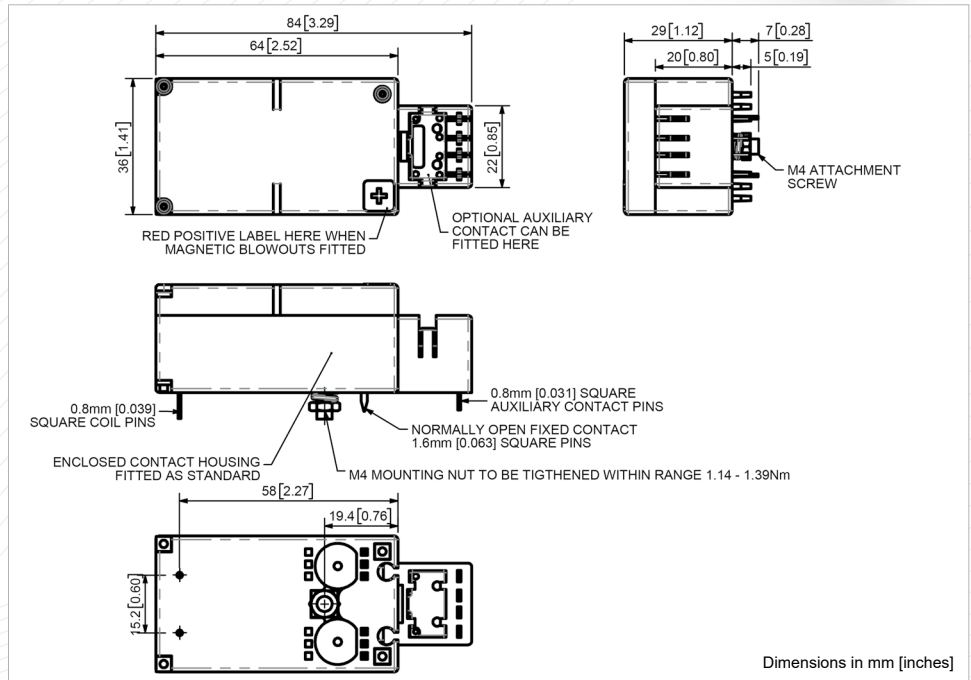
The PC60 is a miniature series single pole single throw contactor designed for printed circuit board mounting. Devised for both interrupted and uninterrupted loads, the PC60 is suitable for switching Resistive, Capacitive and Inductive loads. Typical applications include Telecommunication, UPS and other power conversion systems.

- **Interrupted** current - opening and closing on load with frequent switching (results in increased contact resistance).
- **Uninterrupted** current - no or infrequent load switching requirements (maintains a lower contact resistance).

The PC60 features single pole double breaking main contacts with silver alloy tips, which are weld resistant, hard wearing and have excellent conductivity. The PC60 can be secured to the printed circuit board by means of an M4 bolt. **Note:** The PC range now incorporates the mounting board option, previously assigned to the MB range (existing MB part numbers remain valid).



PC60



Contact Performance Key:
 — Interrupted & Uninterrupted Current

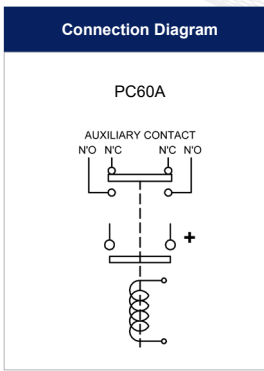
PC60 Available Options

General		Suffix
Auxiliary Contacts	○	A
Auxiliary Contacts - V4	X	
Magnetic Blowouts†	○	B
Magnetic Blowouts - High Powered†	X	
Armature Cap	X	
Mounting Base (see overleaf)	○	
Magnetic Latching‡ (Not fail safe)	○	M
Closed Contact Housing‡	○	
Environmentally Protected IP66§	○	P
EE Type (Steel Shroud)	X	

Contacts	
Large Tips	X
Textured Tips	X
Silver Plating	X
Washable	○

Coil	
AC Rectifier Board (Fitted)	X
Coil Suppression†	X
Flying Leads	X
Manual Override Operation	X
M4 Stud Terminals	X
M5 Terminal Board	X
Vacuum Impregnation	X

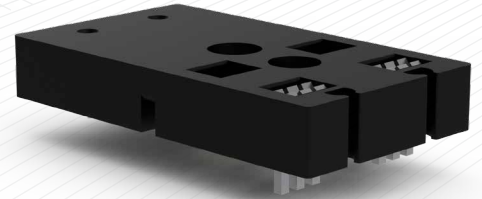
Key: Optional ○ Standard ● Not Available X
 † Connections become polarity sensitive
 ‡ Enclosed top cover standard when blowouts not fitted
 § Not Suitable with Mounting Base



- Performance data provided should be used as a guide only. Some de-rating or variation from figures may be necessary according to application.
- Thermal current ratings stated are dependant upon the size of conductor being used
- For further technical advice email: technical@albrightinternational.com
- Albright reserve the right to change data without prior notice

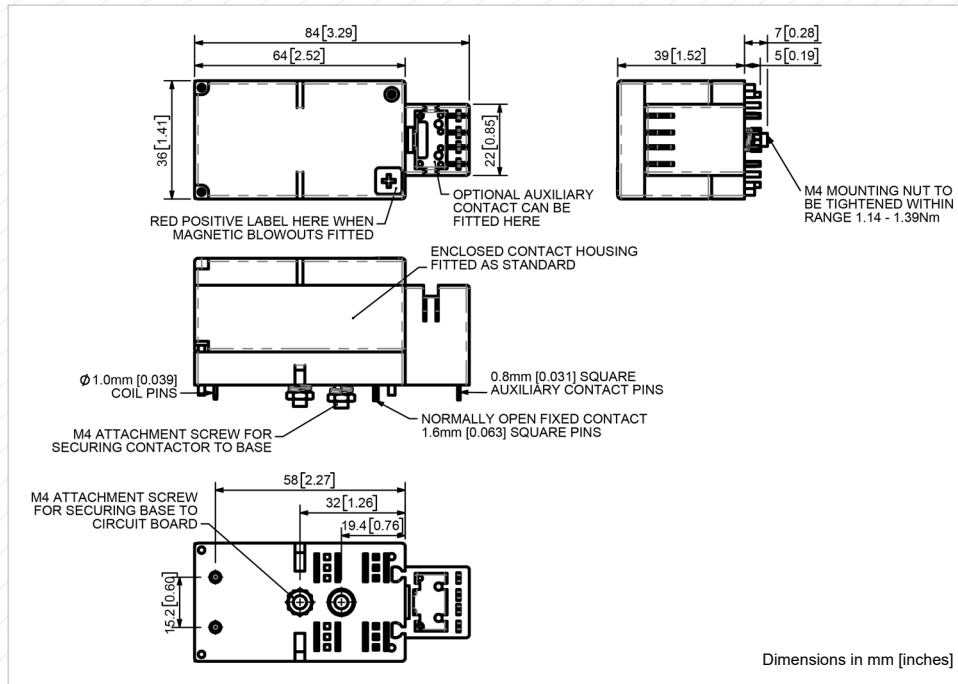
Mounting Boards

All configurations of the PC60 can be supplied with an optional separate mounting base which can be soldered to the circuit board. After soldering and washing the printed circuit board, the PC contactor can be plugged into the base and secured by means of an M4 nut on the underside of the board. Removal for servicing or replacement is possible by removal of the nut and unplugging the PC contactor from the base.



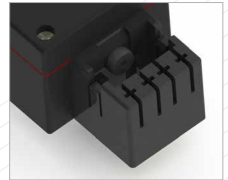
PC60 Mounting Base

PC60 with Mounting Base Drawing



Washable Contactors and Auxiliary Contacts (PC60AW)

Normally the auxiliary contacts are supplied already fitted to the contactor. However, if the printed circuit boards are to be washed after soldering, the auxiliary contact is supplied separately and the contactor is temporarily sealed with a rubber plug. After washing this is removed and the auxiliary contact can then be fitted.



PC60 showing Temporary Rubber Plug

Note: The PC60AW contactors (with or without optional mounting board) are not therefore fully protected against the environment to the same degree as the PC60P.



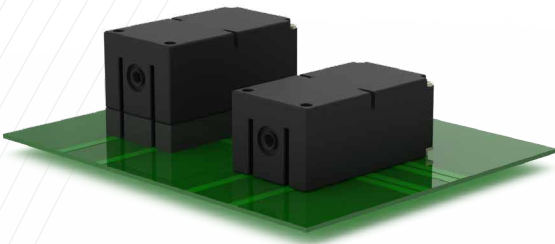
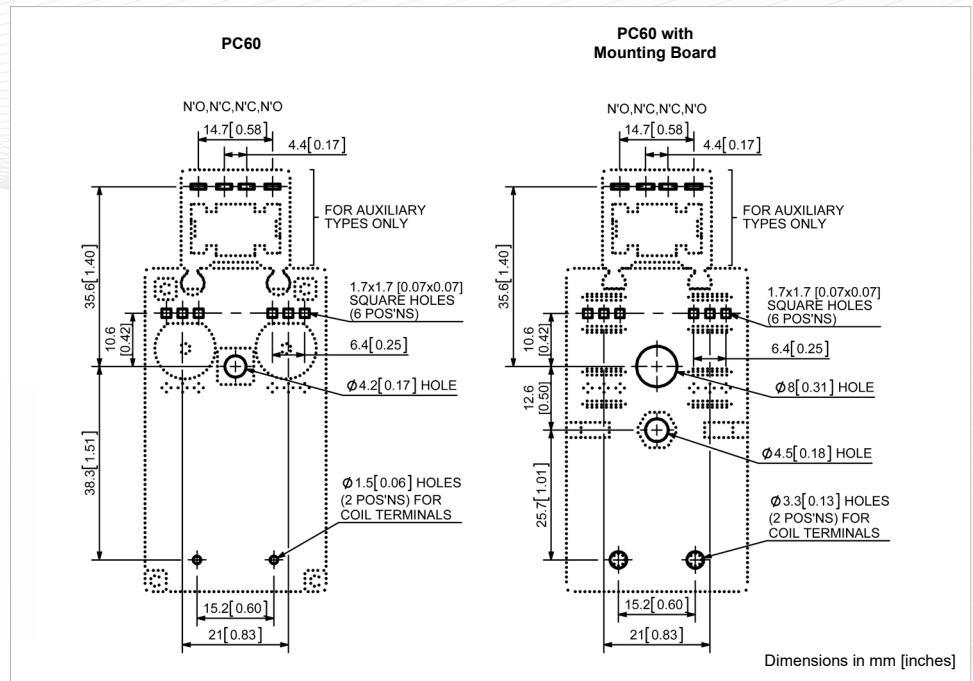
PC60 on Mounting Base

Installation

To accommodate the PC Contactors, printed circuit boards should be drilled in accordance with the mounting details opposite. Prior to soldering, the PC60 can be secured to the circuit board by means of a M4 bolt which protrudes from the underside of the contactor.

If the full current ratings of the contactors are to be utilised, circuit board tracks should have the appropriate thickness and width of copper. Conventional hand or wave soldering techniques can be used.

Mounting Detail



PC60 with Mounting Base and PC60 on Printed Circuit Board