

## 10A, 50V - 1000V Standard Bridge Rectifier

### FEATURES

- Glass passivated chip junction
- Ideal for printed circuit board
- High case dielectric strength
- Typical  $I_R$  less than  $0.1\mu A$
- High surge current capability
- UL Recognized File # E-326243
- RoHS Compliant

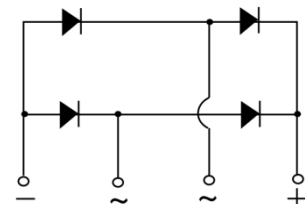
### APPLICATIONS

- Switching mode power supply (SMPS)
- Adapters
- Lighting application

### MECHANICAL DATA

- Case: KBU
- Molding compound meets UL 94V-0 flammability rating
- Terminal: Matte tin plated leads, solderable per J-STD-002
- Meet JESD 201 class 1A whisker test
- Mounting torque: 0.56 N·m maximum
- Polarity: As marked
- Weight: 7.20g (approximately)

KEY PARAMETERS		
PARAMETER	VALUE	UNIT
$I_F$	10	A
$V_{RRM}$	50 - 1000	V
$I_{FSM}$	200	A
$T_{J\ MAX}$	150	°C
Package	KBU	
Configuration	Quad	


**KBU**


### ABSOLUTE MAXIMUM RATINGS ( $T_A = 25^\circ C$ unless otherwise noted)

PARAMETER	SYMBOL	KBU 1001G	KBU 1002G	KBU 1003G	KBU 1004G	KBU 1005G	KBU 1006G	KBU 1007G	UNIT
Marking code on the device		KBU 1001G	KBU 1002G	KBU 1003G	KBU 1004G	KBU 1005G	KBU 1006G	KBU 1007G	
Repetitive peak reverse voltage	$V_{RRM}$	50	100	200	400	600	800	1000	V
Reverse voltage, total rms value	$V_{R(RMS)}$	35	70	140	280	420	560	700	V
Forward current	$I_F$	10							A
Surge peak forward current, 8.3ms single half sine-wave superimposed on rated load	$I_{FSM}$	200							A
Rating for fusing ( $t < 8.3ms$ )	$I^2t$	166							$A^2s$
Junction temperature	$T_J$	- 55 to +150							°C
Storage temperature	$T_{STG}$	- 55 to +150							°C

<b>THERMAL PERFORMANCE</b>			
<b>PARAMETER</b>	<b>SYMBOL</b>	<b>TYP</b>	<b>UNIT</b>
Junction-to-ambient thermal resistance	$R_{\theta JA}$	25	°C/W
Junction-to-case thermal resistance	$R_{\theta JC}$	2.2	°C/W

<b>ELECTRICAL SPECIFICATIONS</b> ( $T_A = 25^\circ\text{C}$ unless otherwise noted)					
<b>PARAMETER</b>	<b>CONDITIONS</b>	<b>SYMBOL</b>	<b>TYP</b>	<b>MAX</b>	<b>UNIT</b>
Forward voltage per diode <sup>(1)</sup>	$I_F = 5\text{A}, T_J = 25^\circ\text{C}$	$V_F$	-	1.0	V
	$I_F = 10\text{A}, T_J = 25^\circ\text{C}$		-	1.1	V
Reverse current @ rated $V_R$ per diode <sup>(2)</sup>	$T_J = 25^\circ\text{C}$	$I_R$	-	5	$\mu\text{A}$
	$T_J = 125^\circ\text{C}$		-	500	$\mu\text{A}$
Junction capacitance per diode	1MHz, $V_R = 4.0\text{V}$	$C_J$	400	-	pF

**Notes:**

1. Pulse test with  $PW = 0.3\text{ms}$
2. Pulse test with  $PW = 30\text{ms}$

<b>ORDERING INFORMATION</b>		
<b>ORDERING CODE<sup>(1)</sup></b>	<b>PACKAGE</b>	<b>PACKING</b>
KBU10xG	KBU	100 / Tray

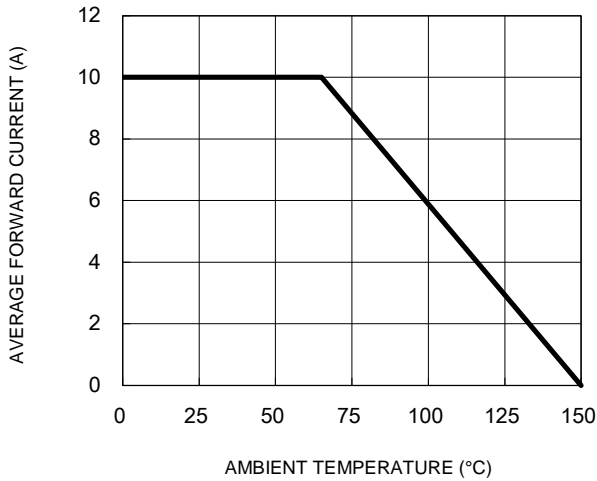
**Notes:**

1. "x" defines voltage from 50V(KBU1001G) to 1000V(KBU1007G)

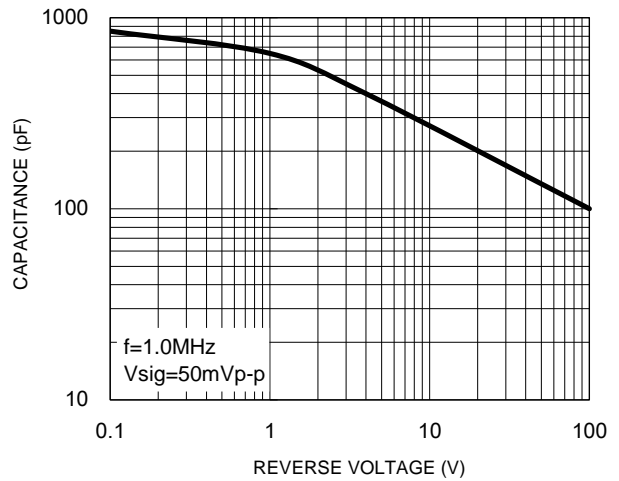
**CHARACTERISTICS CURVES**

( $T_A = 25^\circ\text{C}$  unless otherwise noted)

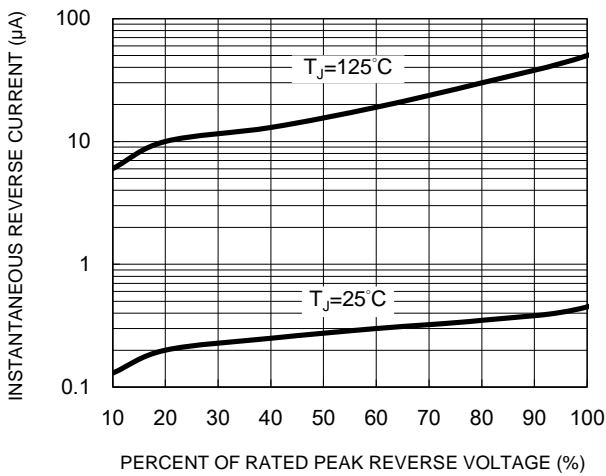
**Fig.1 Forward Current Derating Curve**



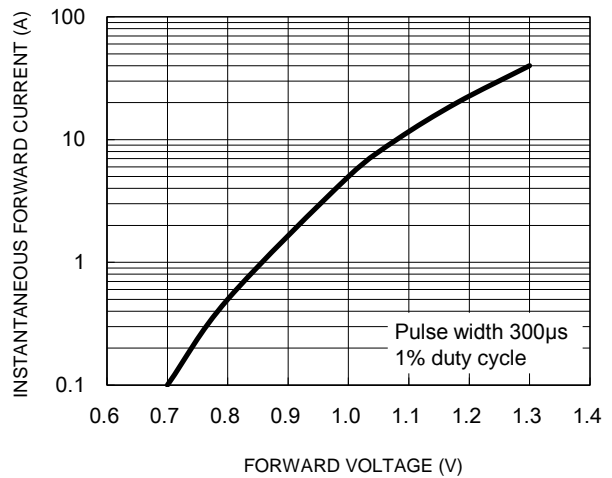
**Fig.2 Typical Junction Capacitance**



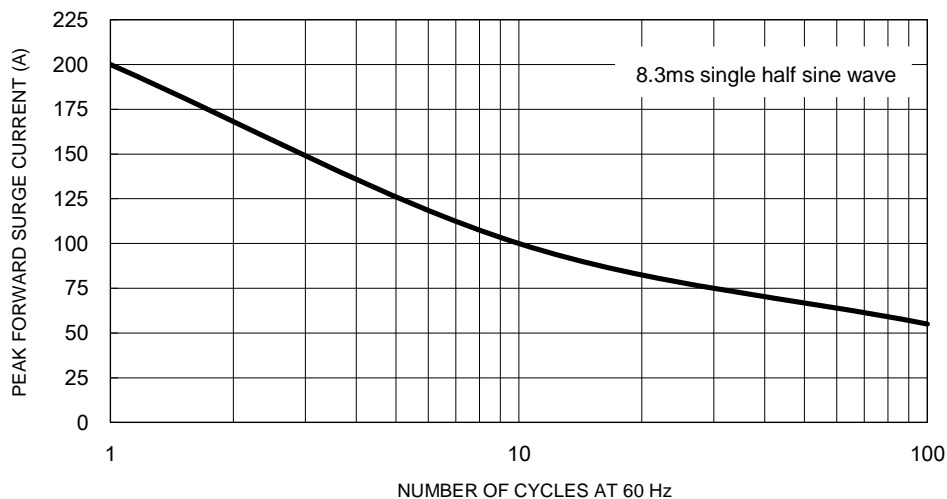
**Fig.3 Typical Reverse Characteristics**



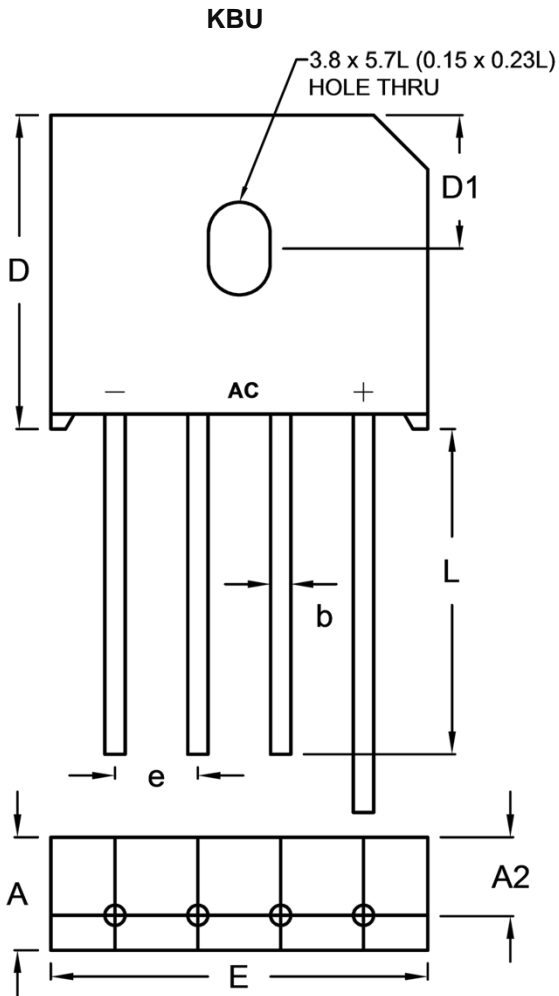
**Fig.4 Typical Forward Characteristics**



**Fig.5 Maximum Non-Repetitive Forward Surge Current**

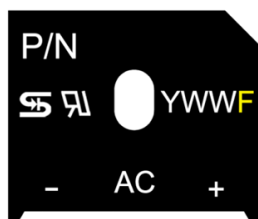


**PACKAGE OUTLINE DIMENSIONS**



DIM.	Unit (mm)		Unit (inch)	
	Min.	Max.	Min.	Max.
A	6.8	7.1	0.268	0.280
A2	4.6	5.0	0.181	0.197
b	1.2	1.3	0.047	0.051
D	18.8	19.8	0.740	0.780
D1	8.2 (TYP)		0.322 (TYP)	
E	22.7	23.7	0.894	0.933
e	4.6	5.6	0.181	0.220
L	20.0	-	0.787	-

**MARKING DIAGRAM**



P/N = Marking Code  
 YWW = Date Code  
 F = Factory Code

## **Notice**

Specifications of the products displayed herein are subject to change without notice. TSC or anyone on its behalf, assumes no responsibility or liability for any errors or inaccuracies.

Purchasers are solely responsible for the choice, selection, and use of TSC products and TSC assumes no liability for application assistance or the design of Purchasers' products.

Information contained herein is intended to provide a product description only. No license, express or implied, to any intellectual property rights is granted by this document. Except as provided in TSC's terms and conditions of sale for such products, TSC assumes no liability whatsoever, and disclaims any express or implied warranty, relating to sale and/or use of TSC products including liability or warranties relating to fitness for a particular purpose, merchantability, or infringement of any patent, copyright, or other intellectual property right.

The products shown herein are not designed for use in medical, life-saving, or life-sustaining applications. Customers using or selling these products for use in such applications do so at their own risk and agree to fully indemnify TSC for any damages resulting from such improper use or sale.

# Mouser Electronics

Authorized Distributor

Click to View Pricing, Inventory, Delivery & Lifecycle Information:

[Taiwan Semiconductor:](#)

[KBU1003G](#) [KBU1004G](#) [KBU1005G](#) [KBU1006G](#) [KBU1007G](#)