

WinSPS-S7 V6

Programming- and Simulation Tool for S7-PLCs (S7-300, S7-400)



You can write your STEP7 program in STL, FBD or LAD.

After this you can upload the written blocks to the on-board Software-PLC to simulate your program.

Use the PLC Mask window to change the state of the digital and analog inputs and watch the results.

The intellisense window of the block editor shows only suitable addresses- so you can enter your code more efficiently.

The live address location window shows you all locations of the current address in the block editor.

The variable monitoring tool has a own web server. So you can watch the variables even on a smart phone or any other mobil device with

a web-browser. You can also enable the speaker symbol in this table to here changing addresses over a wireless headset.

The integrated Software-PLC has a TCP/IP interface. You can connect a TP/OP to it to test your TP/OP functionality.

In the Pro-Edition of WinSPS-S7 you can also transfer the blocks into a real S7-PLC.

Furthermore you have all tools for diagnostic or troubleshooting purposes.

You can configure your PLC with the integrated hardware configurator.

The most important facts



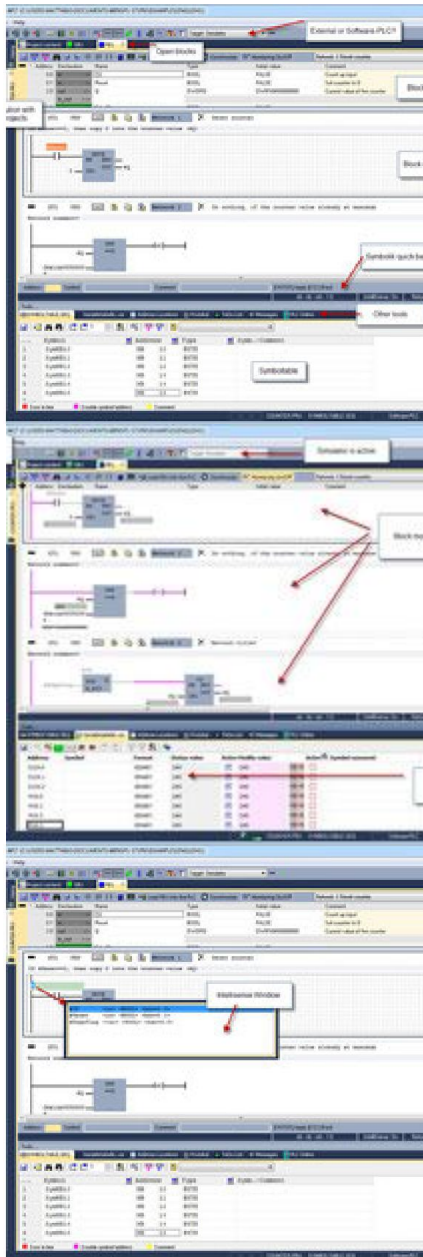
Key-Features:

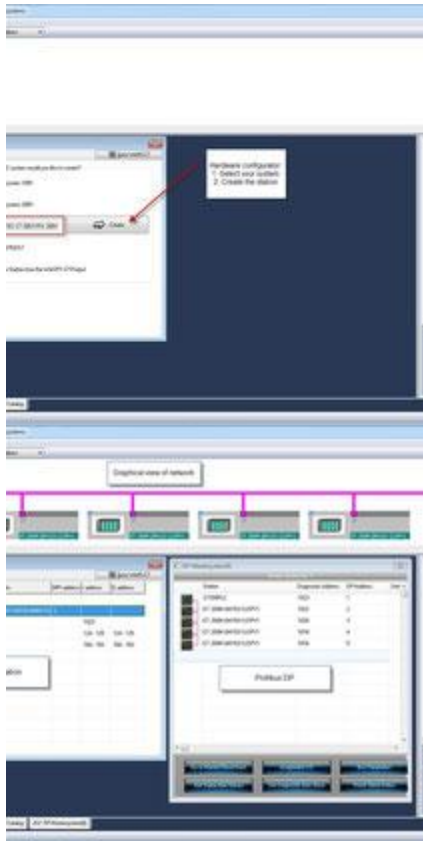
- WinSPS-S7 is a complete programming software for S7-PLC with many additional features
- Write your PLC program in STL, LAD or FBD
- Simulate your PLC program with a virtual PLC (PLC-Mask)
- Import- and Export your original SIEMENS S7-Project
- Build-In hardware configuration for (S7-300 PLCs, VIPA S7-PLCs, with Profibus-DP support)
- S7-Intellisense for faster and better programming experience
- Synchronize function: upload only modified blocks to the PLC with ease.
- The build-in software PLC can also be connected via TCP/IP (for third party software/hardware, e.g. operator panels)
- Special feature: watch the variable table on your smartphone
- Special feature: hear changing addresses in the variable table with a wireless head-set

WinSPS-S7 is available in different editions:

- Pro-Edition for commercial use
- Pro-Edition (private use only)
- Standard-Edition (this edition can not connect to a real PLC)
- Starter-Edition (this edition can not connect to a real PLC, 1000 commands per cycle)

WinSPS-S7 Gallery





Informations



Can be used with the following operating systems:

- Windows 10 (32- and 64 Bit)
- Windows 8 (32- and 64 Bit)
- Windows 7 (32- and 64 Bit)
- Windows XP (32 Bit)
- For all Editions: Home, Pro, Ultimate

Multi-Language Software:

- German
- English
- Spanish
- French
- Italian



WinSPS-S7 is available in different editions for different target group:

WinSPS-S7 Editions:	Starter-Edition	Standard-Edition	Pro-Edition Pro-Edition (privat use) Pro-Edition Classromm Pro-Edition Multi-Classromm
S7-Software-PLC included	Yes	Yes	Yes
Commands per OB1-Cycle***	1000	>80.000	>80.000
Support for real S7-PLCs	No	No	Yes
Hardware configurator included	No	No	Yes

*** Commands per OB1-Cycle: For example "A Q0.0" is one (1) command. The starter edition supports up to 1000 commands in the PLC program.